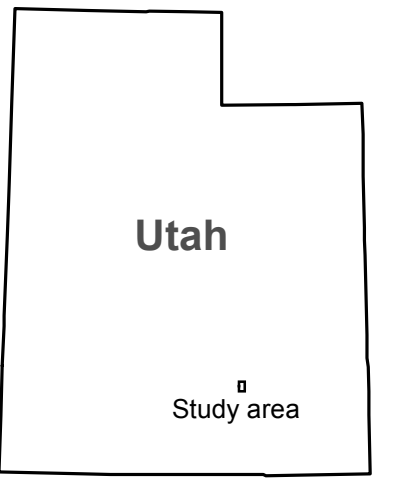
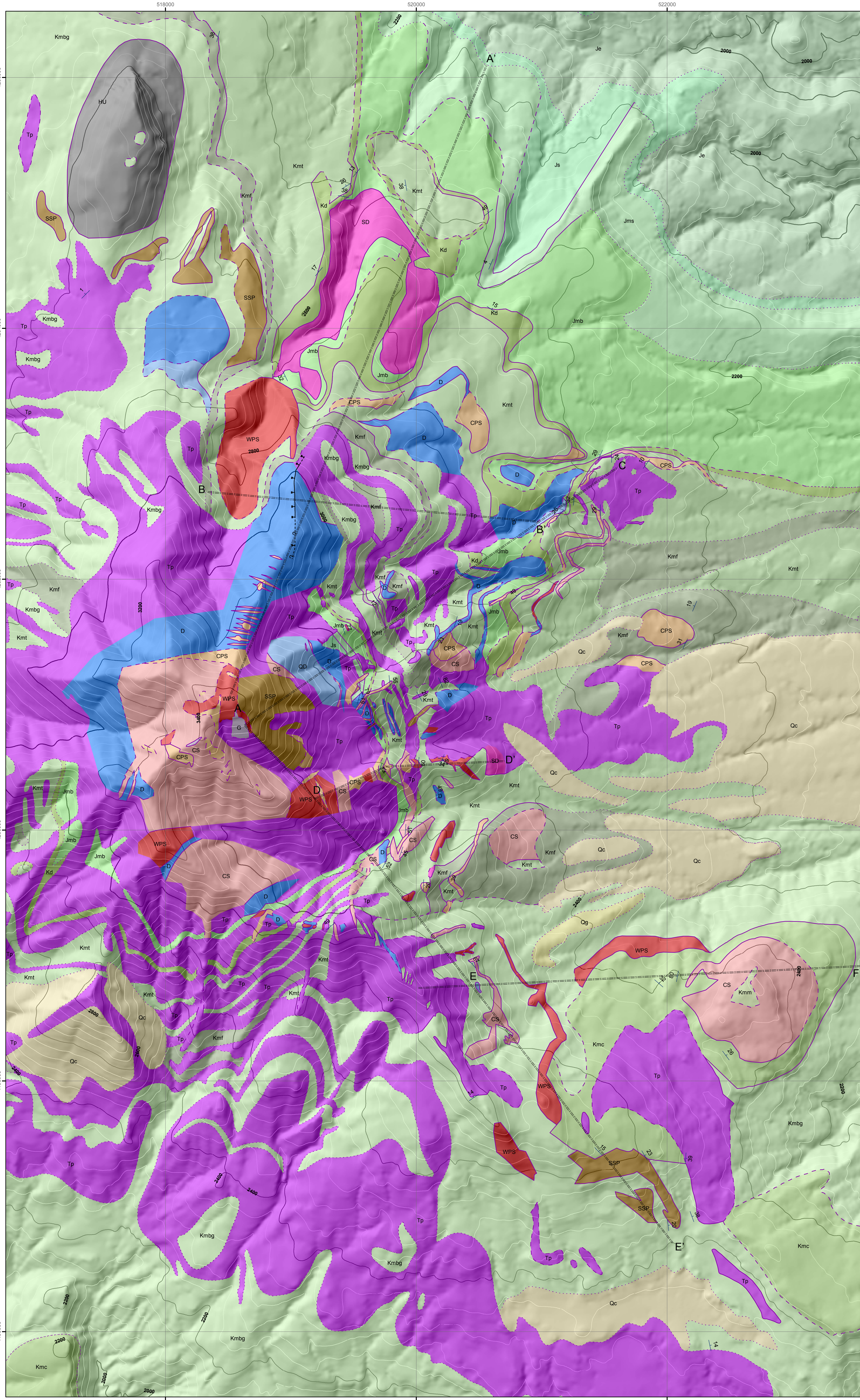
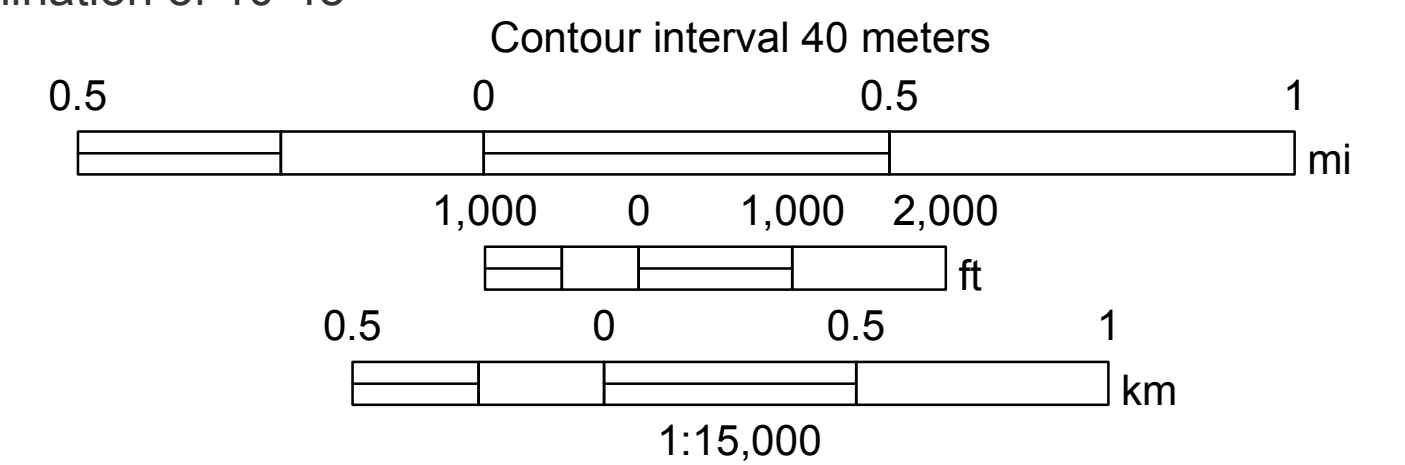


Geologic Map of the Study Area on the East Flank of Mount Pennell, Henry Mountains, Utah

by
Mitchell T. Ward
2014



2012 Magnetic North
Declination of 10°48'



EXPLANATION

- | | | |
|---|---|------------|
| Qc
alluvium/
colluvium | Qg
gravel | QUATERNARY |
| IGNEOUS ROCKS | | |
| TP
unclassified porphyry | | |
| G
granite porphyry | HU
Horn unit | |
| SSP
soda syenite
porphyry | CPS
coarsely porphyritic
syenite | |
| CS
common syenite
porphyry | WPS
weakly porphyritic
syenite | |
| QD
quartz diorite
porphyry | D
diorite porphyry | |
| | SD
sodic diorite
porphyry | |
| TERTIARY | | |

SEDIMENTARY ROCKS

- | | | | | |
|---------------------|---------------------------------------|------------|---|----------|
| Mancos shale | Kmv
Mesaverde Formation | CRETACEOUS | | |
| | Kmm
Masuk member | | | |
| | Kmc
Muley Canyon sandstone | | | |
| | Kmbg
Blue Gate shale member | | | |
| | Kmf
Ferron sandstone member | | | |
| | Kmt
Tununk shale member | | | |
| | Kd
Dakota sandstone | | | |
| | UNCONFORMITY | | | |
| | Morrison Formation | | Jmb
Brushy Basin shale member | JURASSIC |
| | | | Jms
Salt Wash member | |
| UNCONFORMITY | | | | |
| San Rafael group | Js
Summerville Formation | | | |
| | Je
Entrada sandstone | | | |

Contact, dashed where approximated

Fault, high angle
Balls on the downthrown side,
dashed where approximately located

dip angle
Bedding

Abc Abc'
Cross-section lines