

# Brain transcriptome sequencing and assembly of three songbird model systems for the study of social behavior

Christopher N. Balakrishnan<sup>1</sup>, Motoko Mukai<sup>2,3</sup>, Rusty A. Gonser<sup>4</sup>, John C. Wingfield<sup>3</sup>, Sarah E. London<sup>5</sup>, Elaina M. Tuttle<sup>4</sup> and David F. Clayton<sup>6</sup>

<sup>1</sup> Department of Biology and Center for Biodiversity, East Carolina University, Greenville, NC, USA

<sup>2</sup> Department of Food Science, College of Agriculture and Life Sciences, Cornell University, Ithaca, NY, USA

<sup>3</sup> Department of Neurobiology, Physiology and Behavior, University of California, Davis, CA, USA

<sup>4</sup> Department of Biology and The Center for Genomic Advocacy (TCGA), Indiana State University, Terre Haute, IN, USA

<sup>5</sup> Department of Psychology, University of Chicago, Chicago, IL, USA

<sup>6</sup> Division of Biological & Experimental Psychology, School of Biological and Chemical Sciences, Queen Mary University of London, London, UK

## ABSTRACT

Emberizid sparrows (emberizidae) have played a prominent role in the study of avian vocal communication and social behavior. We present here brain transcriptomes for three emberizid model systems, song sparrow *Melospiza melodia*, white-throated sparrow *Zonotrichia albicollis*, and Gambel's white-crowned sparrow *Zonotrichia leucophrys gambelii*. Each of the assemblies covered fully or in part, over 89% of the previously annotated protein coding genes in the zebra finch *Taeniopygia guttata*, with 16,846, 15,805, and 16,646 unique BLAST hits in song, white-throated and white-crowned sparrows, respectively. As in previous studies, we find tissue of origin (auditory forebrain versus hypothalamus and whole brain) as an important determinant of overall expression profile. We also demonstrate the successful isolation of RNA and RNA-sequencing from *post-mortem* samples from building strikes and suggest that such an approach could be useful when traditional sampling opportunities are limited. These transcriptomes will be an important resource for the study of social behavior in birds and for data driven annotation of forthcoming whole genome sequences for these and other bird species.

**Subjects** Animal Behavior, Evolutionary Studies, Genomics, Neuroscience

**Keywords** Song learning, Illumina, RNA-seq, Zonotrichia, Song sparrow, White-throated sparrow, White-crowned sparrow, Zebra finch

Submitted 26 March 2014

Accepted 6 May 2014

Published 22 May 2014

Corresponding author

Christopher N. Balakrishnan,  
balakrishnanc@ecu.edu

Academic editor

Michael Wink

Additional Information and  
Declarations can be found on  
page 13

DOI 10.7717/peerj.396

© Copyright

2014 Balakrishnan et al.

Distributed under

Creative Commons CC-BY 4.0

**OPEN ACCESS**

## INTRODUCTION

The comparative method, broadly speaking, is a powerful approach for understanding adaptations including behavior and central control of physiological responses to environmental change. Natural variation in behavior among species has been used in various taxonomic groups to begin to unravel the molecular underpinnings of animal

social behavior. Among these comparative studies of behavior, different strategies and technologies have been deployed in order to gain an understanding of the proximate mechanisms at play. For example, experimental hormonal manipulations and gene sequence comparisons in different species of *Microtus* voles led to insights into the mechanisms of parental care (Young et al., 1999). Similarly, quantitative trait locus (QTL) mapping studies have recently revealed the genetic architecture of burrowing behavior in *Peromyscus* mice (Weber, Peterson & Hoekstra, 2013). Phylogenetic analyses of rates of molecular evolution based on transcriptomes in eusocial and solitary bees has also led to insights into potential underpinnings of social behavior variation (Woodard et al., 2011).

Songbirds, or oscine passerines, comprise roughly half of avian diversity and also serve as important models for the study of social behavior. Arguably the most prominent of the songbird species for behavioral research is the zebra finch *Taeniopygia guttata*, which now boasts a full suite of genomic and molecular tools including a complete genome sequence (Warren et al., 2010), RNA-seq based mRNA (Warren et al., 2010; Balakrishnan et al., 2012) and microRNA data (Gunaratne et al., 2011; Luo et al., 2012), transgenics (Agate et al., 2009) and cell lines (Itoh & Arnold, 2011; Balakrishnan et al., 2012). A key strength of songbirds as a model system, however, has always been the behavioral complexity and diversity of songbirds as a group (Beecher & Brenowitz, 2005; Brenowitz & Beecher, 2005; Clayton, Balakrishnan & London, 2009).

Among songbirds, many comparative neurobiological studies have focused on three species of new world sparrows (emberizidae). Before the zebra finch assumed its role as a model system for vocal learning, Peter Marler and colleagues had demonstrated age-limited song learning and cultural transmission of song dialects in the white-crowned sparrow, *Zonotrichia leucophrys* (Marler & Tamura, 1964). There is also a striking behavioral polymorphism in which some subspecies, such as Gambel's white-crowned sparrow *Z. l. gambelii*, are migratory, living in large non-territorial flocks during non-breeding seasons, whereas other subspecies are non-migratory and are territorial throughout the year (DeWolfe, Baptista & Petrinovich, 1989). White-throated sparrows *Zonotrichia albicollis* also show polymorphism in behavior but in this case, the polymorphism is known to be caused by a large chromosomal rearrangement on chromosome 2 (Thornycroft, 1966; Thornycroft, 1975). Tan morph individuals are homozygotic for the metacentric form of the chromosome whereas white morphs are almost always heterozygous. In addition to coloration, the two morphs differ in a suite of behaviors including increased aggression and promiscuity and decreased parental care in birds of the white morph (Knapton & Falls, 1983; Collins & Houtman, 1999; Tuttle, 2003). Male song sparrows *Melospiza melodia* are distinctive in that they are territorial during both the breeding season (summer) and much of the non-breeding season (autumn and winter) (Wingfield & Hahn, 1994; Mukai et al., 2009). Different hormonal mechanisms, however, appear to underlie this similar behavioral phenotype with increased plasma testosterone levels driving intensity and persistence of aggression during breeding, but not at other times of year (Wingfield, 1994; Wingfield & Soma, 2002). With this comparative perspective in mind, we have generated brain transcriptomes for these three historically important

emberizid songbird models for the study of social behavior: white-throated sparrow, Gambel's white-crowned sparrow, and song sparrow.

## METHODS

### Sample collection

Samples for each of the three species were collected for diverse research purposes of the laboratories involved, so sampling strategy for each species was unique. Animal procedures were approved by the Institutional Animal Care and Use Committees of the University of California, Davis (protocol 07-13208) and the University of Illinois (protocol 11062) and were conducted in accordance with the NIH Guide for the Principles of Animal Care.

#### *White-throated sparrow*

During migration, white-throated sparrows and other birds are often killed in collisions with buildings. We took advantage of this unfortunate fact by sampling white-throated sparrows that had been opportunistically collected following night migration and collision into McCormick Place, Chicago, IL. Birds that had been killed overnight were collected first thing in the morning beginning at dawn by David Willard, Collection Manager—Birds, Field Museum of Natural History, Chicago, IL. Specimens used in this study were collected during the spring migration in 2010. Each specimen was immediately vouchered at the Field Museum where they were dissected to determine sex. Whole brain tissue was stored in RNA-later (Life Technologies, Carlsbad, CA). Prior to analysis we determined the morph of each bird sampled using a modification of *Michopoulos et al. (2007)*, which is based on the identification of a morph-specific SNP present in the vasoactive intestinal peptide (VIP) gene. We modified the protocol by using labelled PCR primers, so that the amplification products could be analyzed on an ABI PRISM Genetic Analyzer (Life Technologies). For RNA sequencing we used the brains from six males, three white and three tan.

#### *Gambel's white-crowned sparrow*

We captured Gambel's white-crowned sparrows within the University of California, Davis campus in February 2008, using Potter traps baited with seed, and determined their sex using published PCR methods (*Griffiths et al., 1998*). After two weeks of acclimation in captivity we anesthetized 12 male birds with with isoflurane, decapitated them and collected the whole hypothalamus from each bird. After dissection we immediately froze the samples in liquid nitrogen. Fieldwork in California was covered by the US Fish and Wildlife permit (MB713321-0) and State of California permit (SC-004400).

#### *Song sparrow*

Between July and August 2011 we captured seven male song sparrows using song playbacks from behind a mist net. We conducted fieldwork at two locations in central Illinois: "Phillips Tract" (40 07' 54.74"N 88 08' 39.66"W) and Vermillion River Observatory (40 03' 50.79"N 87 33' 30.30"W). We euthanized the birds immediately following capture in the net, and then dissected auditory forebrain tissue (auditory lobule, or AL). AL is a composite brain area including the caudomedial nidopallium (NCM), caudomedial

mesopallium (CMM) and Field L and can be readily dissected following bisection of the brain along the midline (*Cheng & Clayton, 2004*). We immediately froze the specimens on dry ice. Flat skins of collected song sparrows have been accessioned in the Illinois Natural History Survey, Urbana, Illinois. We conducted fieldwork in Illinois under US Fish and Wildlife Service Permit SCCL-41077A.

## **RNA extraction, library preparation and sequencing**

### ***White-throated sparrow and song sparrow***

In order to broadly describe the brain-expressed transcriptome of the white-throated sparrow, we extracted RNA from whole brain. We homogenized the entire brain in Tri-Reagent (Molecular Research Center, Cincinnati, OH) for RNA purification and extracted total RNA following the Tri-Reagent protocol. We then DNase treated (Qiagen, Valencia, CA) the total RNA to remove any genomic DNA contamination, and further purified the resulting RNA using Qiagen RNeasy columns. We assessed the purified total RNA for quality using an Agilent Bioanalyzer (Agilent Technologies, Wilmington, DE). Library preparation and sequencing were done at the University of Illinois Roy J. Carver Biotechnology Center. The RNAseq libraries were constructed with the Illumina TruSeq RNA Sample Prep Kit (Illumina, San Diego, CA). Briefly, polyA<sup>+</sup> messenger RNA was selected from 1 µg of total RNA and chemically fragmented. First-strand cDNA was synthesized with a random hexamer and SuperScript II (ThermoFisher, Waltham, MA). After second-strand synthesis, the double-stranded DNA was blunt-ended, 3'-end A tailed, ligated to barcoded adaptors and amplified with 15 cycles of PCR using Kapa HiFi polymerase (Kapa Biosystems, Woburn, MA). The six barcoded libraries were quantitated with Qubit (ThermoFisher) and the average size was determined on a Bioanalyzer DNA7500 DNA chip (Agilent). The libraries were pooled in equimolar concentration and the pool was quantitated by qPCR on an ABI 7900HT (ThermoFisher). Sequencing was done in a single lane of an Illumina HiSeq2000 using a TruSeq SBS sequencing kit version 3. Fastq files were demultiplexed and generated with the software Casava 1.8.2 (Illumina). The same basic procedure was used to sequence the song sparrow except for the fact that we extracted RNA from the dissected AL (rather than whole brain) tissue, and that samples from seven individuals were run in a single lane of paired end (rather than single end) sequencing.

### ***Gambel's white-crowned sparrow***

We extracted total RNA from each hypothalamus using TRIzol reagent (Life Technologies) followed by RNA cleanup using Qiagen RNeasy Mini Kits. We then pooled RNA samples, quantified them using a Nanodrop (ThermoFisher) and ran them on a Bioanalyzer for quality control (RIN = 8.5). We used this pooled RNA sample to generate a mRNA-seq library of 400 bp size with a mRNA-Seq 8 sample prep kit (Illumina) following manufacturer's protocol with slight modifications. We began by isolating mRNA using oligo(dT) and then fragmented it using divalent cations under elevated temperature. We then reverse transcribed the RNA into cDNA using random primers, modified and ligated with GEN PE adapters. We ran the resulting cDNA on an agarose gel, excised a 400 bp band and enriched

the library with 15 cycles of PCR. We validated the final library using a Bioanalyzer and confirmed a distinct band at approximately 400 bp. Pair-end sequencing (100 bp × 2) was performed by the Genome Center DNA Technologies Core at the University of California, Davis, using an Illumina HiSeq 2000 and TruSeq SBS kit version 2.

### **Zebra finch**

To provide a benchmark for comparison, we compared our newly collected data with previously published data from zebra finches *Taeniopygia guttata* (Balakrishnan *et al.*, 2012, GenBank Accession: [SRX493920](https://www.ncbi.nlm.nih.gov/SRX/493920)–[SRX493922](https://www.ncbi.nlm.nih.gov/SRX/493922)). These data were derived from RNA extracted from the AL of female zebra finches. The three libraries were derived from pools of 10 female finches each, and sequenced on an Illumina Genome Analyser and processed with Illumina pipeline 1.6.

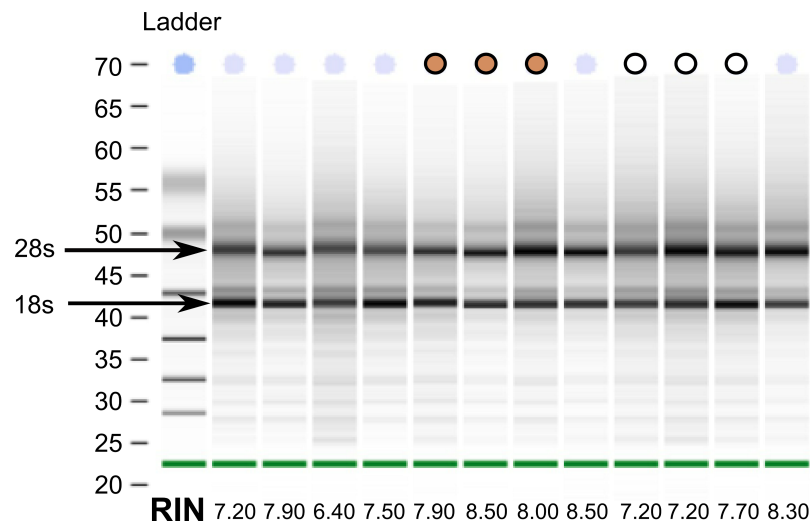
### **Transcriptome assembly, annotation and assessment**

We checked overall sequence quality using FastQC (<http://www.bioinformatics.babraham.ac.uk/projects/fastqc/>) and trimmed reads using ConDeTriV2.2 (Smeds & Kunstner, 2011). We used default settings for trimming except for the high quality (hq) threshold which was set to 20 and lfrac, the maximum fraction of reads with quality <10, which was set to 0.2. The lfrac parameter allows for trimming, rather than complete removal, of reads with low quality ends.

We used the Trinity (version r20131110) assembler (Grabherr *et al.*, 2011) to generate *de novo* assemblies for each species. For white-throated sparrow we assembled the reads for the two color morphs both separately and combined. Assembling the reads separately was reasonable given evidence of sequence divergence within the inversion (Thomas *et al.*, 2008) and assembling the reads together was reasonable to improve coverage outside such areas. We used default settings in Trinity besides those specific to our computing system (we generally used 24 CPUs and allowed for 100G of memory). We used TransDecoder (included in the Trinity package) to identify open reading frames (ORFs) in our predicted transcripts.

We assessed the quality of our assembly by estimating N50 and average transcript length. The shortcomings of such metrics for transcriptome assessment have been described (O'Neil & Emrich, 2013) and we use them here primarily to facilitate comparison with previously published studies. To provide further insight into assembly quality, we also assessed 5' to 3' gene model coverage relative to annotated zebra finch genes (see details below) and quantified the number of transcripts containing both start and stop codons using the annotation information provided by TransDecoder (“type:complete” in the fastq header).

We used BLAST (Altschul *et al.*, 1990) searches against a database of Ensembl (release 74) zebra finch transcripts to annotate our ORF-containing transcripts. Functional description of annotated transcripts was conducted using Gene Ontology, and statistical over and under representation was tested using CORNA software (Wu & Watson, 2009) and Fisher's Exact Tests with *p* values adjusted for multiple testing (Benjamini & Hochberg, 1995). For each assembly we tested our identified set of putative zebra finch orthologs relative to the full population of Ensembl transcripts.



**Figure 1** RNA quality from post-mortem sampled sparrows. Bioanalyzer gel image showing RNA extracted from 12 white-throated sparrows sampled *post-mortem*. RNA integrity numbers (RIN) are given at the bottom and ranged from 6.4 to 8.5. Samples chosen for sequencing are indicated by tan and white circles, representing tan and white morph sparrows, respectively.

### Gene expression and read-mapping profiling

In order to compare read mapping and gene expression profiles across libraries, we mapped RNA-seq reads to the zebra finch whole genome assembly (2.3.4) using Stampy, a read mapper tailored for divergent reads relative to the reference genome (Lunter & Goodson, 2011). We mapped reads for all six individual white-throated sparrows, three of the seven song sparrows, and the pooled white-crowned sparrow using default settings but with the substitution rate set to 0.05 to accommodate sequence divergence. In addition, we mapped reads from previously published zebra finch auditory forebrain reads (Balakrishnan et al., 2012) using substitution rate = 0.01.

To quantify gene expression, we used htseq-count (Anders, Pyl & Huber, 2014) to tally reads relative to Ensembl gene models and then normalized the read counts using the regularized log transformation in DE-Seq2 (Anders & Huber, 2010). Expression profiles were then visualized by Euclidean distance based clustering and principal components analysis (PCA) using heatmap.2 in the gplots R package, and the plotPCA function in DE-Seq2. We then also used the geneBody.py script within the RseqC package (Wang, Wang & Li, 2012) to describe read coverage across gene models and to test specifically for a 3' bias in transcript coverage in *post-mortem* samples.

## RESULTS & DISCUSSION

### RNA extraction and sequencing

Despite collecting tissues for the white-throated sparrow opportunistically from building strikes, we were able to extract reasonably high quality RNA from all samples (Fig. 1). This finding suggests that *post-mortem* collected birds can be used as a viable source of RNA for transcriptome sequencing. From a total of twelve samples, we selected a



**Table 1 RNA-seq dataset.** Raw number of reads and bases before and after trimming with ConDeTri.

Species	Reads before	Bases before	Paired reads after	Paired read bases after	Single reads after	Single read bases after
WTSP-Tan	99,374,744	9,937,474,400	NA	NA	97,162,587	9,014,814,467
WTSP-White	97,605,312	9,760,531,200	NA	NA	95,347,015	8,779,352,471
SOSP-Paired	271,249,550	27,124,855,000	245,289,038	23,613,455,033	11,228,223	992,474,010
WCSP-Paired	160,229,712	16,022,971,200	153,636,836	14,171,465,431	2,871,235	213,815,184

**Table 2 Transcriptome assembly description.** Tissue of origin, pool size, assembly statistics (N50, average transcript length, number of transcripts) and annotation description (number of zebra finch genes with significant BLAST hit) for whole assembly and open reading frame (ORF) containing transcripts. “Complete Transcripts” are those containing both a start and stop codon. We used the individual tan and white morph assemblies in the subsequent BLAST search and annotation which yielded 15,805 genes.

Species	Tissue	Pool size	N50	Mean length	# Transcripts	# ORF	Complete transcripts	ZF genes
WTSP-Tan	Whole brain	3	2,557	1,119	116,894	54,868	22,799	–
WTSP-White	Whole brain	3	1,942	960	95,129	37,910	11,855	–
WTSP-Both	Whole brain	6	2,284	982	149,184	58,284	24,388	15,805
SOSP	Auditory forebrain	7	4,072	1,416	276,670	133,740	79,451	16,864
WCSP	Hypothalamus	12	3,415	1,591	307,617	206,926	115,515	16,646

set of six (three per morph) with Bioanalyzer RNA integrity numbers (RIN) above 7 (10-083 (7.2), 10-092 (7.2), 10-093 (7.7) and 10-118 (8.5), 10-124 (8.0) and 10-308 (7.9)). Samples for sequencing were also chosen such that tan and white morphs were collected at the same time of year (spring migration 2010). By chance, our tan samples had higher average RINs than the white morph samples did (Fig. 1). RNA from the other two species were of good quality and met Illumina’s standard QC benchmark of RIN > 8. All of our sequencing runs yielded high quality sequence data. After fairly stringent quality trimming, we retained over 89% of the initial nucleotides sequenced (Table 1). Raw RNA seq reads have been deposited to the GenBank Short Read Archive under accession numbers [SRX342288–SRX342293](#), [SRX493875–SRX493882](#), and [SRX514971](#).

### Transcriptome assembly and annotation

We reconstructed a large number of transcripts (>95,000) and open reading frame (ORF) containing transcripts (>54,000) in all of our assemblies, exceeding the likely number of coding genes (Table 2). These transcripts reflect a combination of partial transcripts, alternative isoforms, allelic variants, and noncoding transcripts. We were able to generate high quality transcriptomes based on N50 and average transcript length (Table 2). N50s for the assemblies were 1,942 for the white morphed white-throated sparrow, 2,557 for the tan morph, 3,415 for Gambel’s white-crowned sparrow and 4,072 for the song sparrow (Table 2). For the song sparrow, this is an improvement over a recent 454-based transcriptome (N50 = 482; *Srivastava et al., 2012*). As expected, N50 in general improved with increased sequencing depth (with paired end data sets benefitting from both the reads being paired and having more reads). One exception to this rule was in the white-throated sparrow, where combining reads from the two morphs actually generated a worse assembly in terms of N50 relative to the “tan morph only” assembly (combined N50 = 2,284, tan

only  $N50 = 2,557$ ). Tan morph individuals are homozygous for a large structural polymorphism spanning much of chromosome 2 whereas white morph individuals are heterozygous. Recombination within the inversion is suppressed, allowing genetic divergence in this region (Thomas *et al.*, 2008), and potentially explaining the drop in  $N50$  in the combined assembly. For the purposes of annotation of the white-throated sparrow we therefore used the two morph-specific assemblies, merging them after the assembly process.

Although  $N50$ s were generally high, the white-throated sparrow assemblies, which were based on smaller, single-end datasets and *post-mortem* samples, had the lowest scores. This effect was even more dramatic when assemblies were assessed in terms of the number of complete transcripts possessing both a start and stop codon. Gambel's white-crowned, song, and white-throated sparrow transcriptomes contained 115,515, 79,451, and 24,388 complete transcripts, respectively (Table 2). Because the white-throated sparrow samples were collected *post-mortem* and had the fewest reads, we cannot determine whether *post-mortem* sampling itself influenced assembly quality. Given the relatively high quality (RINs) of the white-throated sparrow RNA, however, it is more likely that the reduced quality of the assembly is a result of it being generated from a smaller dataset.

For white-throated sparrow we were able to find predicted transcripts with significant BLAST hits to 15,805 zebra finch genes (89% of Ensembl annotated zebra finch genes), whereas for song sparrow we found 16,846 (94%) and Gambel's white-crowned sparrow 16,646 (93%). Therefore, in terms of unique BLAST hits, the song sparrow and Gambel's white-crowned assemblies were also better than that of the white-throated sparrows. All three assemblies, however, cover a large proportion of known genes and represent an improvement of over recent 454-based bird transcriptomes (e.g., violet-eared waxbill, 11,084 genes, Balakrishnan *et al.*, 2013).

We evaluated and compared the general composition of genes present in each of the new assemblies by performing a Gene Ontology (GO) analysis, using the GO annotation of the complete zebra finch genome as the point of reference for the statistical tests of enrichment (Table 3). All three datasets shared a number of similarities, including significant enrichment for eight GO categories ("cytoplasm", "intracellular", "mitochondrion", "nucleic acid binding", "nucleolus", "protein binding", "protein phosphorylation" and "transferase activity") and under-representation of six categories ("cytokine activity", "DNA integration", "extracellular region", "hormone activity", "immune response" and "MCH Class I protein complex"). The under-represented categories may in part reflect the well-described pattern of limited immune activity, or "immune privilege" in the brain (Galea, Bechmann & Perry, 2007). As in previous studies of avian brain gene expression, however, we did see some evidence of expression of the MHC Class I gene itself (Ekblom *et al.*, 2010; Balakrishnan *et al.*, 2013).

Interestingly, genes annotated with the GO term "olfactory receptor activity" are well represented in all three assemblies (where observed/expected were 165/150 in white-throated sparrows, 165/156 in song sparrow, and 165/158 in Gambel's white-crowned sparrow, out of a total of 168 annotated genes). This was notable as a previous 454-based whole brain transcriptome of another songbird did not detect any olfactory receptor



**Table 3 Functional description of transcriptome assemblies.** Gene Ontology categories significantly (A) over- and (B) under-represented in song (SOSP), white-crowned (WCSP) and white-throated (WTSP) sparrows (observed/expected, FDR adjusted Fisher's exact test,  $p < 0.05$ ).

GO Category	SOSP	WCSP	WTSP
<b>A</b>			
cytoplasm	1810/1739	1793/1718	1751/1650
intracellular	1629/1575	1632/1555	1577/1494
mitochondrion	790/753	788/744	781/715
nucleic acid binding	935/903	935/892	900/857
nucleolus	244/231	243/229	241/220
protein binding	5298/5218	5258/5154	5037/4951
protein phosphorylation	558/539	558/532	542/511
transferase activity, transferring phosphorous containing groups	538/519	538/513	522/493
<b>B</b>			
cytokine activity	43/58	40/58	37/55
DNA integration	8/13	7/13	4/12
extracellular region	263/320	264/316	238/303
hormone activity	31/43	32/43	26/41
immune response	68/88	61/87	57/84
MHC Class I protein complex	3/8	2/7	2/7

genes at all ([Balakrishnan et al., 2013](#)). The detection of such genes here suggests that the increased sequencing depth provided by the Illumina platform has aided in this regard. Despite the generally tissue-restricted distribution of olfactory receptor expression, we were able to pick up these genes in all of our tissue samples irrespective of the brain region targeted. High depth RNA-sequencing data including those presented here will therefore be useful for annotating these diverse olfactory receptor transcripts.

Thirteen other GO terms were significantly under-represented only in the white-throated sparrow assembly ([Table 4](#)). These categories were relatively well-represented in the other two sparrow assemblies ([Table 4](#)) and included “visual function”, “G-protein coupled receptor activity”, and “neurotransmitter transport”. The white-throated sparrow assembly differs from the others in several factors that could contribute to this difference in gene composition, including tissue of origin (whole brain, versus auditory forebrain or hypothalamus), physiological condition (spring migration, versus breeding season or captive/wintering) and *post-mortem* tissue collection.

### Transcriptome coverage of zebra finch gene models

We performed further analysis of read distribution and the relative abundance of different transcripts in each of the source tissues, by mapping RNAseq reads back to the zebra finch genome reference. For comparison we also included previously published RNAseq read data from the zebra finch auditory forebrain ([Balakrishnan et al., 2013](#)). White-throated sparrow reads mapped at a lower rate (average = 83% of reads mapped) than reads from Gambel's white-crowned sparrow (90%), song sparrow (94%) and zebra finch (93%).

**Table 4 Functional differences between post-mortem and fresh tissues.** GO terms underrepresented in post-mortem white-throated sparrow samples (observed/expected, adjusted  $p < 0.01$ ), but not in song sparrow and white-crowned sparrow (adjusted  $p > 0.05$ ).

GO category	WTSP	WCSP	SOSP
photoreceptor activity	3/12	10/13	9/13
protein-chromophore linkage	3/12	10/13	9/13
visual perception	7/18	16/19	15/19
response to stimulus	7/17	14/18	13/18
G-protein coupled receptor activity	345/381	391/397	389/402
G-protein coupled purinergic nucleotide receptor activity	11/21	18/22	18/23
G-protein coupled purinergic nucleotide receptor signaling pathway	11/21	18/22	18/23
transporter activity	136/157	153/164	157/166
receptor activity	497/532	552/554	551/561
G-protein coupled receptor signaling pathway	463/496	513/517	514/523
integral to membrane	1564/1617	1683/1687	1692/1704
neurotransmitter transport	16/24	23/25	21/25

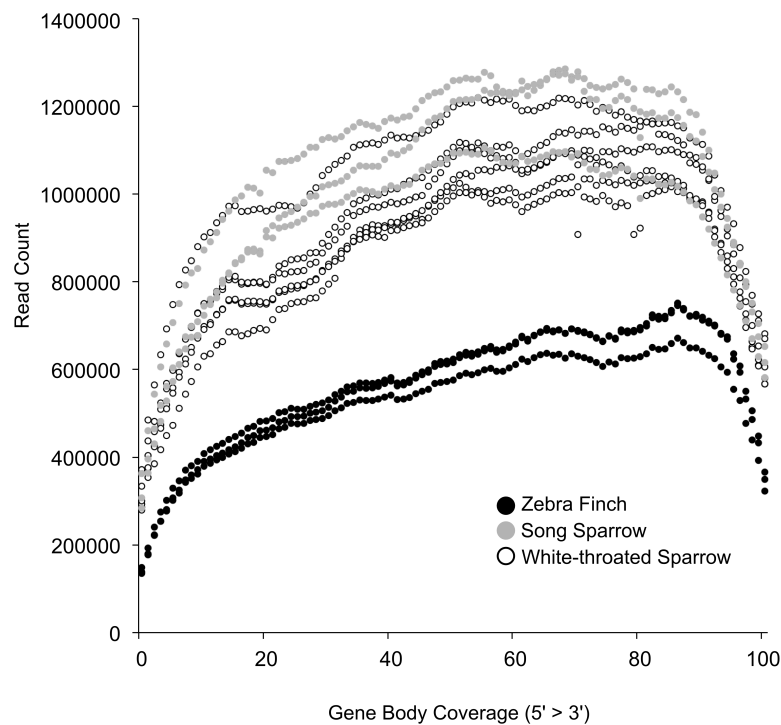
Among the reads that did map to the genome, however, all of the species were similar in showing a large proportion of reads (53.2  $\pm$  3.6%) mapping outside of currently defined zebra finch genes, suggesting extensive transcription outside of known genes.

Based on this read mapping we were able to assess coverage of annotated genes. This was important given our *post-mortem* sampling of white-throated sparrows. In highly degraded samples we would expect to see a strong 3' bias in gene coverage. RNA quality as measured by RIN was only slightly lower in white-throated sparrow samples and thus, we found that 3' bias was similar across all of our samples (Fig. 2). This finding further suggests that RNA degradation may not be the primary factor associated with the lower assembly quality in the white-throated sparrow assembly.

*Cheviron, Carling & Brumfield (2011)* documented the time course of RNA degradation *post-mortem*, and also suggest that such samples can provide a useful source of RNA, even though such specimens are often overlooked. Similarly, a recent RNA-sequencing study of pinnipeds successfully used *post-mortem* samples (*Hoffman et al., 2013*). Although clearly not an ideal strategy for studies aimed at quantifying gene expression, the use of recently killed samples is viable strategy for initial transcriptome description, and in our study gave access to a large portion of the transcriptome. This approach could be particularly useful for rare species where collection of fresh specimens is impossible.

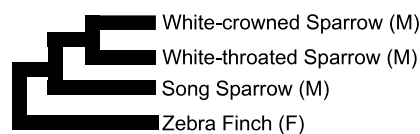
### Impacts of ancestry, tissue of origin, and library preparation on expression profile

We used clustering analysis to compare the broad structure of gene expression in the different samples, recognizing that the samples differed in multiple dimensions (i.e., species, sex, brain region, physiological condition, collection method, sequencing method). If species or sex were the dominant factors driving the differences in gene

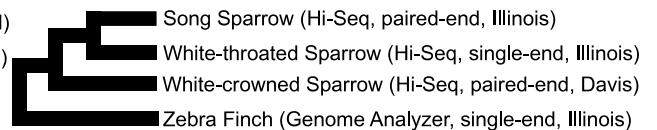


**Figure 2** Coverage of zebra finch gene models by RNA-seq reads. Gene model coverage across all genes based on mapping of reads to the zebra finch genome. Samples collected *post-mortem* from white-throated sparrow show a similar gene coverage profile to freshly collected samples. Zebra finch data included fewer total reads, explaining the lower depth across genes.

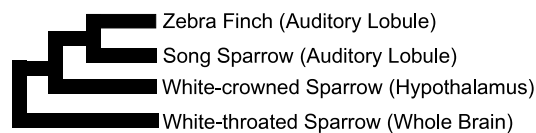
A) Phylogeny, Sex



B) Sequencing platform, strategy, and facility



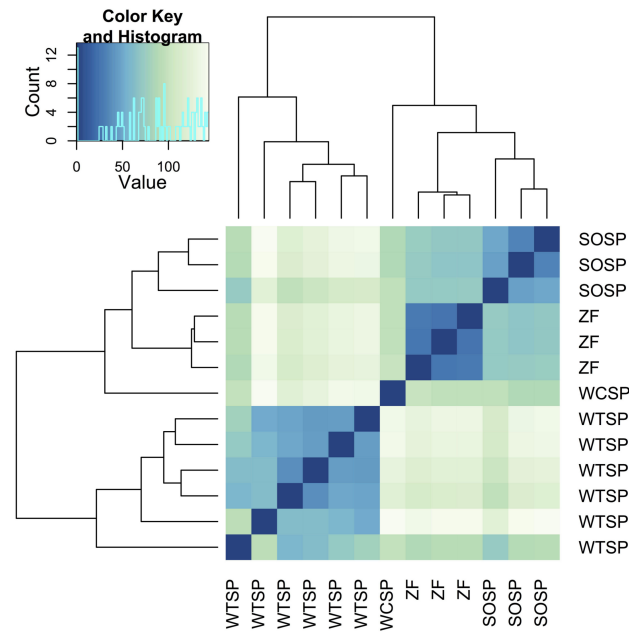
C) Tissue



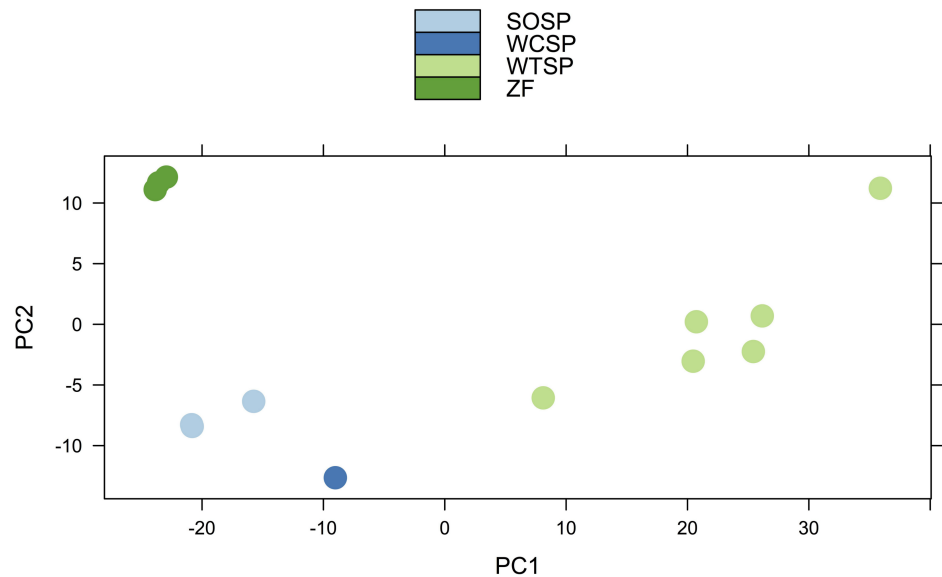
**Figure 3** Alternative expectations for expression profile clustering. Alternative expectations if (A) phylogeny or sex (B) sequencing platform or library preparation protocols or (C) tissue of origin, were the dominant factor underlying expression clustering. Only tissue of origin unites zebra finch and song sparrow samples together as observed in the clustering analysis (Fig. 4).

expression patterns, one would expect to see a clustering pattern with zebra finch as the most divergent profile (Fig. 3A). Similarly, if the sequencing facility and platform were dominant technical factors one would expect to see either the zebra finch or the white crowned-sparrow as most divergent (Fig. 3B). However, the zebra finch samples clustered closely with the song sparrow samples taken from the same brain region (auditory

A.



B.



**Figure 4** Clustering of expression profiles from four songbird species. (A) Hierarchical clustering and (B) Principal components analysis of expression profiles for six white-throated sparrow (WTSP), three song sparrow (SOSP), three zebra finch (ZF) and one white-crowned sparrow libraries. Libraries derived from auditory lobule (AL) tissue cluster (SOSP and ZF) to the exclusion of the others. White-throated sparrow samples, taken from whole brain (rather than forebrain as the other samples are) show divergent and variable profiles. Zebra Finch (ZF) samples collected in captivity and generated from pools of 10 individuals, show much reduced sample variability.

forebrain), with the white throated sparrow samples from the whole brain clustering together as most divergent, and the Gambel's white-crowned sparrow samples from hypothalamus in between (Figs. 3C and Fig. 4). This echoes previous findings that brain region is a major determinant of gene expression pattern in songbirds (Replugle *et al.*, 2008; Drnevich *et al.*, 2012). Both euclidean distance-based clustering and PCA also highlight the fact that zebra finches, which were sacrificed in captivity and sequenced in pools of ten, had much reduced variance in expression profile relative to our non-pooled, field-collected white-throated sparrow and song sparrow samples (Fig. 4).

## CONCLUSION

Transcriptome assemblies are a valuable resource, particularly for species without reference genomes, providing access to a large proportion of the coding and noncoding expressed genome. For taxa with genomes, or with genomes in progress, transcriptome data provides empirical (as opposed to model based) information on transcript structures including alternative isoforms that are not well-annotated in most species. We have presented here neuro-transcriptomic data for three important model species for the study of social behavior and neurobiology building on a growing body of such data (e.g., Balakrishnan *et al.*, 2013; Ekblom *et al.*, 2014; MacManes & Lacey, 2012; Moghadam *et al.*, 2013).

## ACKNOWLEDGEMENTS

Thanks to Matt MacManes for helpful feedback on the preprint version of this paper. David Willard (Collection Manager—Birds, Field Museum of Natural History, Chicago, IL) collected and provided access to white-throated sparrow tissues used in this study. Antonio Celis Murillo provided invaluable assistance with fieldwork on song sparrows in Illinois.

## ADDITIONAL INFORMATION AND DECLARATIONS

### Funding

Funding for this work was provided by the US National Institutes of Health, National Institute for General Medical Sciences 1RC1GM091556 (to David F. Clayton), the US National Science Foundation, Division of Integrative Organismal Systems 1010429 (to John C. Wingfield), the University Research Council at Indiana State University, NIH 1R01GM084229 (to EM Tuttle and RA Gonser) and East Carolina University. The funders had no role in study design, data collection and analysis, decision to publish, or preparation of the manuscript.

### Grant Disclosures

The following grant information was disclosed by the authors:

NIH: 1RC1GM091556.

NSF: IOS-1010429.

University Research Council at Indiana State University NIH: 1R01GM084229.

East Carolina University.

## Competing Interests

The authors declare there are no competing interests.

## Author Contributions

- Christopher N. Balakrishnan conceived and designed the experiments, performed the experiments, analyzed the data, contributed reagents/materials/analysis tools, wrote the paper, prepared figures and/or tables, reviewed drafts of the paper.
- Motoko Mukai, Sarah E. London and Elaina M. Tuttle conceived and designed the experiments, performed the experiments, contributed reagents/materials/analysis tools, wrote the paper, reviewed drafts of the paper.
- Rusty A. Gonser conceived and designed the experiments, contributed reagents/materials/analysis tools, reviewed drafts of the paper.
- John C. Wingfield and David F. Clayton conceived and designed the experiments, contributed reagents/materials/analysis tools, wrote the paper, reviewed drafts of the paper.

## Animal Ethics

The following information was supplied relating to ethical approvals (i.e., approving body and any reference numbers):

All animal procedures were approved by the Institutional Animal Care and Use Committees of the University of California, Davis (07-13208) and the University of Illinois (11062) and were conducted in accordance with the NIH Guide for the Principles of Animal Care.

## Field Study Permissions

The following information was supplied relating to field study approvals (i.e., approving body and any reference numbers):

Illinois: US Fish and Wildlife Service (SCCL-41077A); California: US Fish and Wildlife Service (MB713321-0); and State of California (SC-004400).

## DNA Deposition

The following information was supplied regarding the deposition of DNA sequences:

GenBank: [SRX342288–SRX342293](#), [SRX493875–SRX493882](#), [SRX514971](#).

## Supplemental Information

Supplemental information for this article can be found online at <http://dx.doi.org/10.7717/peerj.396>.

## REFERENCES

- Agate RJ, Scott BB, Haripal B, Lois C, Nottebohm F. 2009. Transgenic songbirds offer an opportunity to develop a genetic model for vocal learning. *Proceedings of the National Academy of Sciences of the United States of America* **106**:17963–17967 DOI [10.1073/pnas.0909139106](https://doi.org/10.1073/pnas.0909139106).



- Altschul SF, Gish W, Miller W, Myers EW, Lipman DJ. 1990. Basic local alignment search tool. *Journal of Molecular Biology* 215:403–410 DOI 10.1016/S0022-2836(05)80360-2.
- Anders S, Huber W. 2010. Differential expression analysis for sequence count data. *Genome Biology* 11:R106 DOI 10.1186/gb-2010-11-10-r106.
- Anders S, Pyl PT, Huber W. 2014. HTSeq—a Python framework to work with high-throughput sequencing data. *bioRxiv preprint*.
- Balakrishnan CN, Chapus C, Brewer MS, Clayton DF. 2013. Brain transcriptome of the violet-eared waxbill *Uraeginthus granatina* and recent evolution in the songbird genome. *Open Biology* 3:Article 130063 DOI 10.1098/rsob.130063.
- Balakrishnan CN, Lin Y-C, London SE, Clayton DF. 2012. RNA-seq transcriptome analysis of male and female zebra finch cell lines. *Genomics* 100:363–369 DOI 10.1016/j.ygeno.2012.08.002.
- Beecher MD, Brenowitz EA. 2005. Functional aspects of song learning in songbirds. *Trends in Ecology & Evolution* 20:143–149 DOI 10.1016/j.tree.2005.01.004.
- Benjamini Y, Hochberg Y. 1995. Controlling the false discovery rate—a practical and powerful approach to multiple testing. *Journal of the Royal Statistical Society Series B-Methodological* 57:289–300.
- Brenowitz EA, Beecher MD. 2005. Song learning in birds: diversity and plasticity, opportunities and challenges. *Trends in Neurosciences* 28:127–132 DOI 10.1016/j.tins.2005.01.004.
- Cheng HY, Clayton DF. 2004. Activation and habituation of extracellular signal-regulated kinase phosphorylation in zebra finch auditory forebrain during song presentation. *Journal of Neuroscience* 24(34):7503–7513 DOI 10.1523/JNEUROSCI.1405-04.2004.
- Cheviron ZA, Carling MD, Brumfield RT. 2011. Effects of postmortem interval and preservation method on RNA isolated from field-preserved avian tissues. *Condor* 113:483–489 DOI 10.1525/cond.2011.100201.
- Clayton DF, Balakrishnan CN, London SE. 2009. Integrating genomes, brain and behavior in the study of songbirds. *Current Biology* 19:R865–R873 DOI 10.1016/j.cub.2009.07.006.
- Collins CE, Houtman AM. 1999. Tan and white color morphs of White-throated Sparrows differ in their non-song vocal responses to territorial intrusion. *Condor* 101:842–845 DOI 10.2307/1370072.
- DeWolfe BB, Baptista LF, Petrinovich L. 1989. Song development and territory establishment in Nuttalls White-Crowned Sparrows. *Condor* 91:397–407 DOI 10.2307/1368318.
- Drnevich J, Replogle KL, Lovell P, Hahn TP, Johnson F, Mast TG, Nordeen E, Nordeen K, Strand C, London SE, Mukai M, Wingfield JC, Arnold AP, Ball GF, Brenowitz EA, Wade J, Mello CV, Clayton DF. 2012. Impact of experience-dependent and -independent factors on gene expression in songbird brain. *Proceedings of the National Academy of Sciences of the United States of America* 109:17245–17252 DOI 10.1073/pnas.1200655109.
- Eklom R, Balakrishnan CN, Burke T, Slate J. 2010. Digital gene expression analysis of the zebra finch genome. *BMC Genomics* 11:219 DOI 10.1186/1471-2164-11-219.
- Eklom R, Wennekes P, Horsburgh GJ, Burke T. 2014. Characterization of the house sparrow (*Passer domesticus*) transcriptome: a resource for molecular ecology and immunogenetics. *Molecular Ecology Resources* 14(3):636–646 DOI 10.1111/1755-0998.12213.
- Galea I, Bechmann I, Perry VH. 2007. What is immune privilege (not)? *Trends in Immunology* 28:12–18 DOI 10.1016/j.it.2006.11.004.
- Grabherr MG, Haas BJ, Yassour M, Levin JZ, Thompson DA, Amit I, Adiconis X, Fan L, Raychowdhury R, Zeng Q, Chen Z, Mauceli E, Hacohen N, Gnirke A, Rhind N, di Palma F,

- Birren BW, Nusbaum C, Lindblad-Toh K, Friedman N, Regev A. 2011. Full-length transcriptome assembly from RNA-Seq data without a reference genome. *Nature Biotechnology* 29:644–U130 DOI 10.1038/nbt.1883.
- Griffiths R, Double MC, Orr K, Dawson RJG. 1998. A DNA test to sex most birds. *Molecular Ecology* 7:1071–1075 DOI 10.1046/j.1365-294x.1998.00389.x.
- Gunaratne PH, Lin YC, Benham AL, Drnevich J, Coarfa C, Tennakoon JB, Creighton CJ, Kim JH, Milosavljevic A, Watson M, Griffiths-Jones S, Clayton DF. 2011. Song exposure regulates known and novel microRNAs in the zebra finch auditory forebrain. *BMC Genomics* 12:277 DOI 10.1186/1471-2164-12-277.
- Hoffman JI, Thorne MAS, Trathan PN, Forcada J. 2013. Transcriptome of the dead: characterisation of immune genes and marker development from necropsy samples in a free-ranging marine mammal. *BMC Genomics* 14:52 DOI 10.1186/1471-2164-14-52.
- Itoh Y, Arnold AP. 2011. Zebra finch cell lines from naturally occurring tumors. *In Vitro Cellular & Developmental Biology-Animal* 47:280–282 DOI 10.1007/s11626-011-9392-9.
- Knapton RW, Falls JB. 1983. Differences in parental contribution among pair types in the polymorphic white-throated sparrow. *Canadian Journal of Zoology* 61(6):1288–1292 DOI 10.1139/z83-173.
- Lunter G, Goodson M. 2011. Stampy: a statistical algorithm for sensitive and fast mapping of Illumina sequence reads. *Genome Research* 21:936–939 DOI 10.1101/gr.111120.110.
- Luo GZ, Hafner M, Shi Z, Brown M, Feng G-H, Tuschl T, Wang X-J, Li XC. 2012. Genome-wide annotation and analysis of zebra finch microRNA repertoire reveal sex-biased expression. *BMC Genomics* 13:727 DOI 10.1186/1471-2164-13-727.
- MacManes MD, Lacey EA. 2012. The social brain: transcriptome assembly and characterization of the hippocampus from a social subterranean rodent, the colonial tuco-tuco (*Ctenomys sociabilis*). *PLoS ONE* 7:e45524 DOI 10.1371/journal.pone.0045524.
- Marler P, Tamura M. 1964. Culturally transmitted patterns of vocal behavior in sparrows. *Science* 146:1483–1486 DOI 10.1126/science.146.3650.1483.
- Michopoulos V, Maney DL, Morehouse CB, Thomas JW. 2007. A genotyping assay to determine plumage morph in the White-throated Sparrow (*Zonotrichia albicollis*). *The Auk* 124(4):1330–1335 DOI 10.1642/0004-8038(2007)124[1330:AGATDP]2.0.CO;2.
- Moghadam HK, Harrison PW, Zachar G, Szekely T, Mank JE. 2013. The plover neurotranscriptome assembly: transcriptomic analysis in an ecological model species without a reference genome. *Molecular Ecology Resources* 13:696–705 DOI 10.1111/1755-0998.12096.
- Mukai M, Replogle K, Drnevich J, Wang G, Wacker D, Band M, Clayton DF, Wingfield JC. 2009. Seasonal differences of gene expression profiles in song sparrow (*Melospiza melodia*) hypothalamus in relation to territorial aggression. *PLoS ONE* 4:e8182 DOI 10.1371/journal.pone.0008182.
- O’Neil ST, Emrich SJ. 2013. Assessing *De Novo* transcriptome assembly metrics for consistency and utility. *BMC Genomics* 14:465 DOI 10.1186/1471-2164-14-465.
- Replogle K, Arnold AP, Ball GF, Band M, Bensch S, Brenowitz EA, Dong S, Drnevich J, Ferris M, George JM, Gong G, Hasselquist D, Hernandez AG, Kim R, Lewin HA, Liu L, Lovell PV, Mello CV, Naurin S, Rodriguez-Zas S, Thimmapuram J, Wade J, Clayton DF. 2008. The songbird neurogenomics (SoNG) initiative: community-based tools and strategies for study of brain gene function and evolution. *BMC Genomics* 9:131 DOI 10.1186/1471-2164-9-131.

- Smeds L, Kunstner A. 2011. CONDETRI—a content dependent read trimmer for illumina data. *PLoS ONE* 6:e26314 DOI 10.1371/journal.pone.0026314.
- Srivastava A, Winker K, Shaw TI, Jones KL, Glenn TC. 2012. Transcriptome analysis of a North American songbird, *Melospiza melodia*. *DNA Research* 19:325–333 DOI 10.1093/dnares/dss015.
- Thomas JW, Caceres M, Lowman JJ, Morehouse CB, Short ME, Baldwin EL, Maney DL, Martin CL. 2008. The chromosomal polymorphism linked to variation in social behavior in the white-throated sparrow (*Zonotrichia albicollis*) is a complex rearrangement and suppressor of recombination. *Genetics* 179:1455–1468 DOI 10.1534/genetics.108.088229.
- Thornycroft HB. 1966. Chromosomal polymorphism in white-throated sparrow *Zonotrichia albicollis* (Gmelin). *Science* 154:1571–1572 DOI 10.1126/science.154.3756.1571.
- Thornycroft HB. 1975. Cytogenetic study of white-throated sparrow, *Zonotrichia albicollis* (Gmelin). *Evolution* 29:611–621 DOI 10.2307/2407072.
- Tuttle EM. 2003. Alternative reproductive strategies in the white-throated sparrow: behavioral and genetic evidence. *Behavioral Ecology* 14:425–432 DOI 10.1093/beheco/14.3.425.
- Wang L, Wang S, Li W. 2012. RSeQC: quality control of RNA-seq experiments. *Bioinformatics* 28:2184–2185 DOI 10.1093/bioinformatics/bts356.
- Warren WC, Clayton DF, Ellegren H, Arnold AP, Hillier LW, Künstner A, Searle S, White S, Vilella AJ, Fairley S, Heger A, Kong L, Ponting CP, Jarvis ED, Mello CV, Minx P, Lovell P, Velho TAF, Ferris M, Balakrishnan CN, Sinha S, Blatti C, London SE, Li Y, Lin Y-C, George J, Sweedler J, Southey B, Gunaratne P, Watson M, Nam K, Backström N, Smeds L, Nabholz B, Itoh Y, Whitney O, Pfennig AR, Howard J, Völker M, Skinner BM, Griffin DK, Ye L, McLaren WM, Flicek P, Quesada V, Velasco G, Lopez-Otin C, Puente XS, Olender T, Lancet D, Smit AFA, Hubley R, Konkel MK, Walker JA, Batzer MA, Gu W, Pollock DD, Chen L, Cheng Z, Eichler EE, Stapley J, Slate J, Eklom R, Birkhead T, Burke T, Burt D, Scharff C, Adam I, Richard H, Sultan M, Soldatov A, Lehrach H, Edwards SV, Yang S-P, Li X, Graves T, Fulton L, Nelson J, Chinwalla A, Hou S, Mardis ER, Wilson RK. 2010. The genome of a songbird. *Nature* 464:757–762 DOI 10.1038/nature08819.
- Weber JN, Peterson BK, Hoekstra HE. 2013. Discrete genetic modules are responsible for complex burrow evolution in *Peromyscus* mice. *Nature* 493:402–U145 DOI 10.1038/nature11816.
- Wingfield JC. 1994. Regulation of territorial behavior in the sedentary song sparrow, *Melospiza melodia morphna*. *Hormones and Behavior* 28:1–15 DOI 10.1006/hbeh.1994.1001.
- Wingfield JC, Hahn TP. 1994. Testosterone and territorial behavior in sedentary and migratory sparrows. *Animal Behaviour* 47:77–89 DOI 10.1006/anbe.1994.1009.
- Wingfield JC, Soma KK. 2002. Spring and autumn territoriality in song sparrows: same behavior, different mechanisms? *Integrative and Comparative Biology* 42:11–20 DOI 10.1093/icb/42.1.11.
- Woodard SH, Fischman BJ, Venkat A, Hudson ME, Varala K, Cameron SA, Clark AG, Robinson GE. 2011. Genes involved in convergent evolution of eusociality in bees. *Proceedings of the National Academy of Sciences of the United States of America* 108:7472–7477 DOI 10.1073/pnas.1103457108.
- Wu X, Watson M. 2009. CORNA: testing gene lists for regulation by microRNAs. *Bioinformatics* 25:832–833 DOI 10.1093/bioinformatics/btp059.
- Young LJ, Nilsen R, Waymire KG, MacGregor GR, Insel TR. 1999. Increased affiliative response to vasopressin in mice expressing the V-1a receptor from a monogamous vole. *Nature* 400:766–768 DOI 10.1038/23650.