

Collaborating With Your Campus Community

To Execute Your Library's High Impact Educational Practices



First Year Seminars & Experiences

Common Read Program's Pirate Read

Libguide on *Evicted* by Matthew Desmond includes reviews, videos, guides, exploring topics, campus events, and research help

First Year Student Orientations

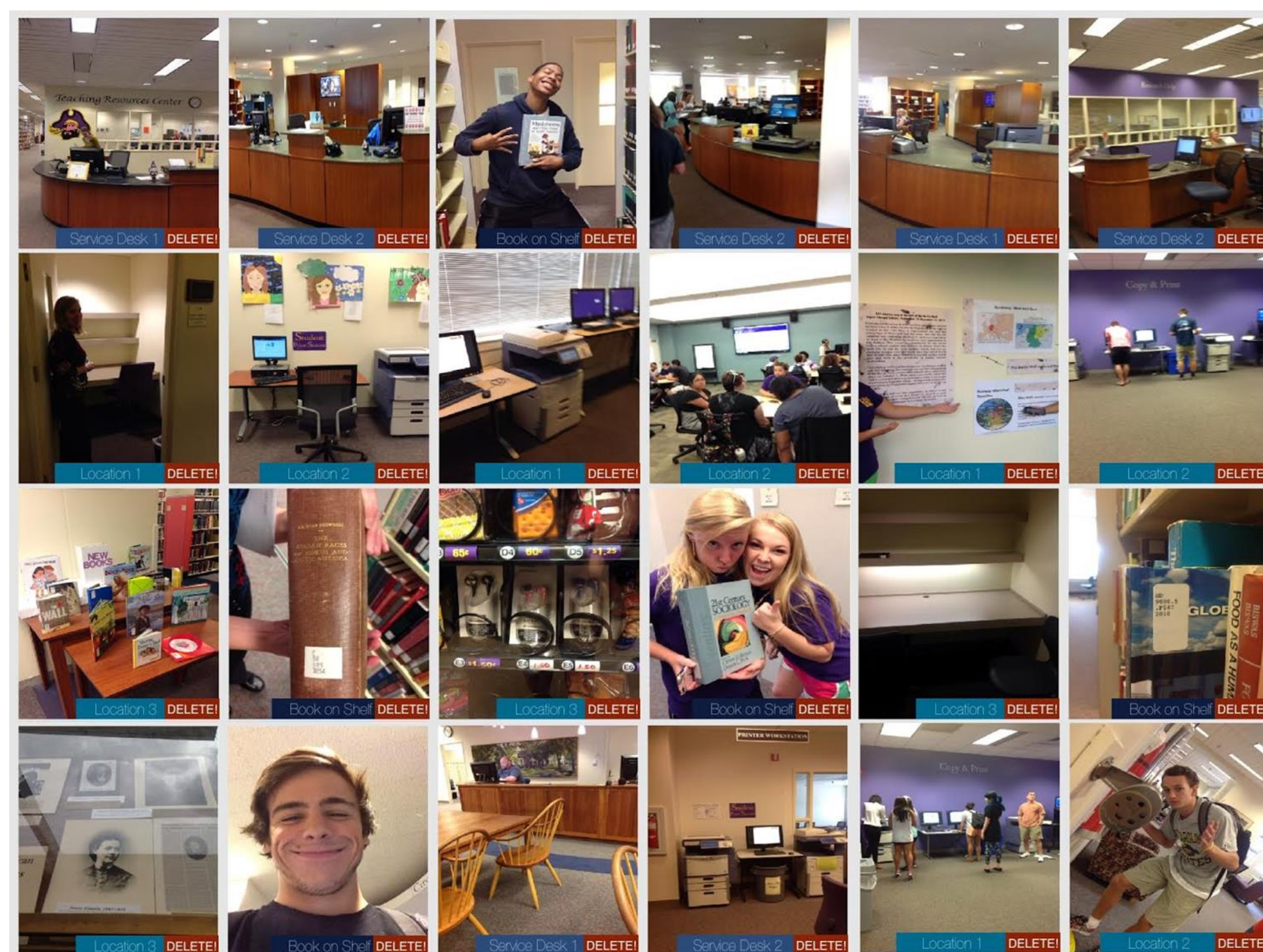
Resource fair exceptions held at library

First Year Seminar (COAD 1000)

SNAP 6 Scavenger Hunt

Open Houses

Tours and resource fair



Common Intellectual Experience

Research, Creative & Activity Week

- Librarians serve as judges
- Poster presentation workshop on oral presentations, poster presentations, and a practice session with presentation feedback provided by librarians
- Libguide including: poster design, content, presentation, templates & examples, oral presentation hints, printing & archiving support, and recordings of oral presentations
- Winning poster presentations displayed at the library

Cohorts

Project STEPP

Collaboration with students with learning disabilities - orientation and library instruction

Freshmen Immersion Program

Designed to enhance the students' transition to college, offer study skills assistance, and help students become engaged in activities within the university. A limited number of incoming freshmen are invited to participate in this program) - push library tutorials, libguides, research consultations

Study Abroad

Libguides, meet with faculty led programs & participate in pre-departure orientation

High Impact Educational Practices

- First-Year Seminars and Experiences
- Common Intellectual Experiences
- Learning Communities
- Writing-Intensive Courses
- Collaborative Assignments and Projects
- Undergraduate Research
- Diversity/Global Learning
- Service Learning, Community-Based Learning
- Internships
- Capstone Courses and Projects

<https://www.aacu.org/resources/high-impact-practices>

Carolyn Willis
Outreach Coordinator
Joyner Library
East Carolina University

David Hisle
Learning Technologies Librarian
Joyner Library
East Carolina University

Learning Communities

Group planning

- Meet with faculty advisors and housing directors
- Coffee with advisors

Spotlight Series

- Highlighting Joyner Library resources and services
- Meet with LLC advisors to promote library services and instruction sessions
- Custom promotional flyers and Articulate Studio-based virtual tour

Undergraduate Research

Blackboard Modules

Two dozen modules developed including content on academic integrity/plagiarism, critical thinking skills, and Library 101 mini-course with Blackboard-based quiz.

Writing Intensive Courses

Library instructors contact WI classes to encourage library instruction and promote consultation services

Library Sponsored Awards

Michael F. Bassman Honors Thesis Award
Rhem/Schwarzmann Prize for Recognition of Student Research
W. Keats Sparrow Writing Award

2016-2017 W. Keats Sparrow Writing Award

Call for Nominations

Eligibility & Guidelines

- Papers must include a research component using Joyner Library's resources.
- Research papers written for an ECU English 1100 or 2201 class during the Summer 2016, Fall 2016, or Spring 2017 semesters are eligible for consideration.
- There is no submission limit. Please complete the paper submission checklist for each paper.
- Papers may be submitted by the instructor (with the student's permission) or by the student.
- Learn more at <http://www.ecu.edu/cs-lib/awards/keatsSparrow.cfm>

1st place - \$500
2nd Place - \$300
3rd Place - \$150

*award amount will be added to your ECU Debit Card

Questions? Contact David Hisle at hisle@ecu.edu or 328-4978

Diversity/Global Learning

- Study Abroad orientation participation and libguide
- Global Awareness University Committee
- Library Diversity Committee
- OER, ILS, Course Reserves

Human Library

Participants check out human "books" to promote open dialog, break stereotypes, and increase inclusion on campus

Capstone Courses and Projects

Curriculum Mapping

Map departments and programs to identify points of need for library instruction

Consultation Service

- One on one research guidance
- Support for team projects with small group librarian consultations