

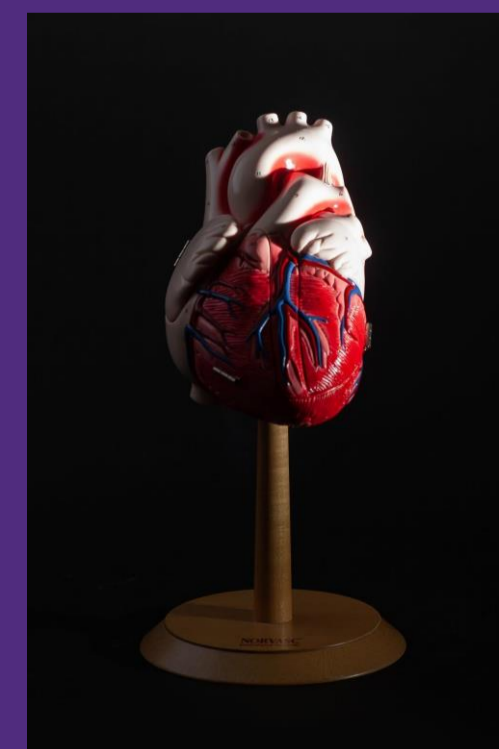
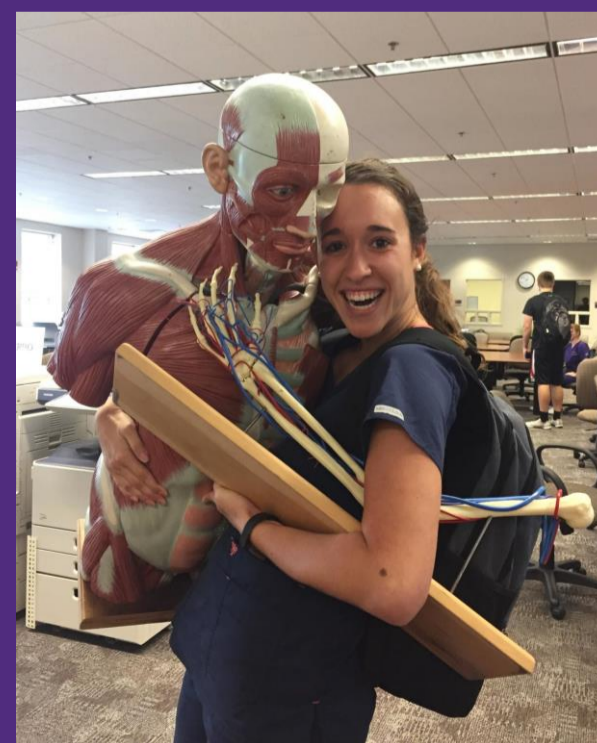
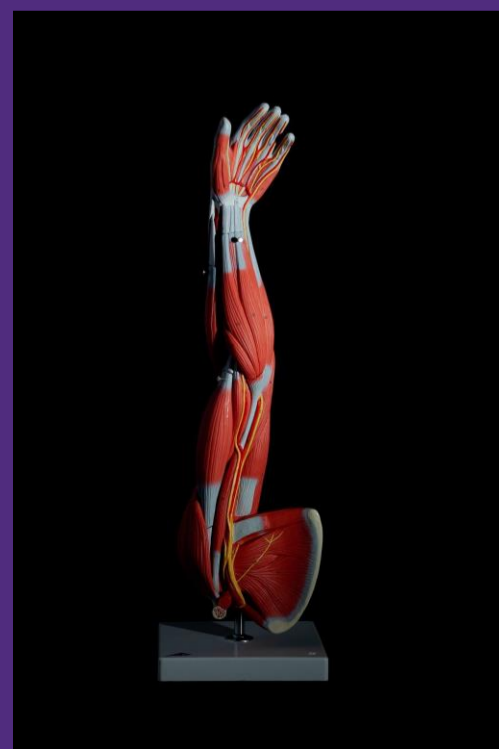


Gross Anatomy In the Library: Evaluating the Impact of Anatomical Models in Academic Health Sciences Libraries

G.J. Corey Harmon and Mary Roby

Models are common, though usage varies

- Nearly 61% of responding AAHSL libraries have at least one model while ~10% had more than 100 models.
- Feedback from Student User Surveys:
 - ✓ "They are awesome! They make it easier to learn."
 - ✓ "The lab manual doesn't give as good of a reference for the models we use in class, so these models help me study every week."
- Laupus Library Collection Stats:
 - Size: 236
 - Total Circulation 2011-March 2021: 21,571
 - Apr 2019-Mar 2020 Circulation: 4088 (47% of total circulation).
 - Overall Cost Per Use: \$8.57



Background: Laupus Library began its anatomical model collection in the late 1980s with one model. In intervening years, the collection has grown to 236 models ranging from single organs to entire bodies. As of March 25, 2021, the circulation count for the models was 21,571. During the 2018-2019 academic year, we observed that several of the models had become too damaged to continue circulating and we evaluated whether to replace them or slowly discontinue the service. Based on circulation numbers, as well as anecdotal evidence, we chose to replace the damaged models and expand the collection further.

Description: We supplemented our previously collected data with empirical methods to provide additional evidence to inform future decisions about continued investments in the anatomical model lending program. We examined the types of patrons using the models, each model's usage statistics, and their cost per use. As a comparison, we looked at the statistics for our virtual anatomy subscriptions. We surveyed the students who check out the physical models regarding their assessment of this program's value to them. Finally, we surveyed all Association of Academic Health Sciences Libraries (AAHSL) members about their physical model collection and its usage in addition to searching the literature to find other evidence of the value that models provide in health sciences education.

Conclusion: Our data shows that 80.39% of our models are checked out by undergraduates at our institution while graduate students account for 13.72% and faculty/staff make up 3.17%. Nursing students accounted for 62% of the model checkouts and 91% of students surveyed believed the models positively impacted their learning outcomes. We also surveyed all AAHSL libraries (n=181) and received responses from 89 (49%). Nearly 61% reported having at least one model with 9 having over 100 models. 77.53% reported having e-Anatomy resources as well. Responses about circulation ranged from hardly at all to several thousand per year. The model collection is a high use distinctive feature of Laupus Library and the data supports our decision to continue investing in it.

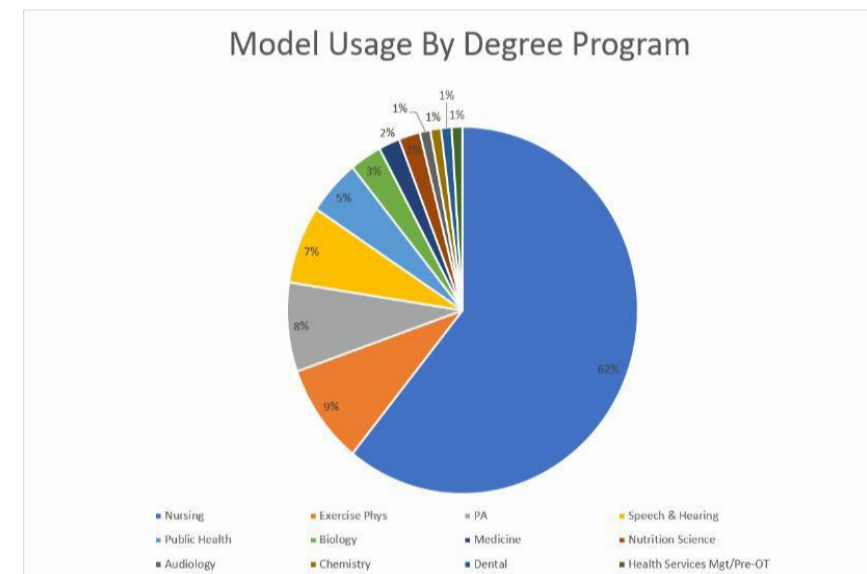
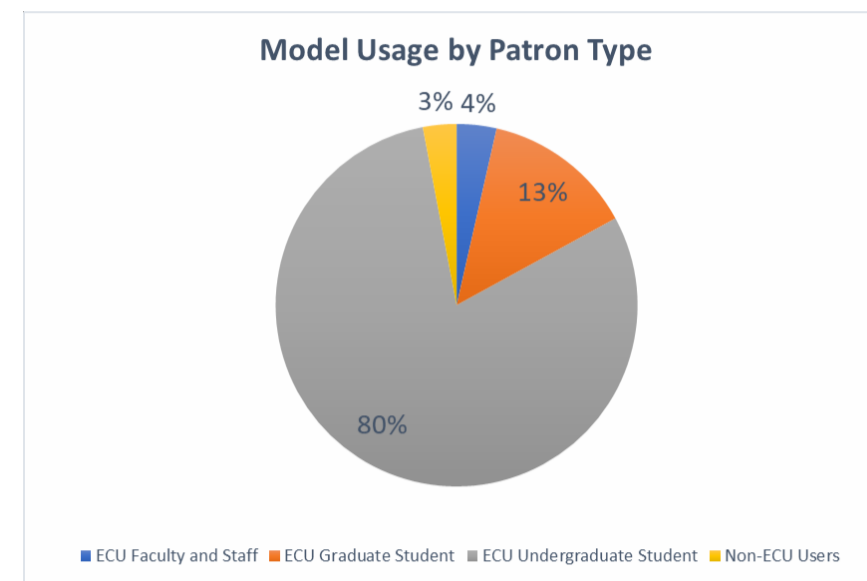
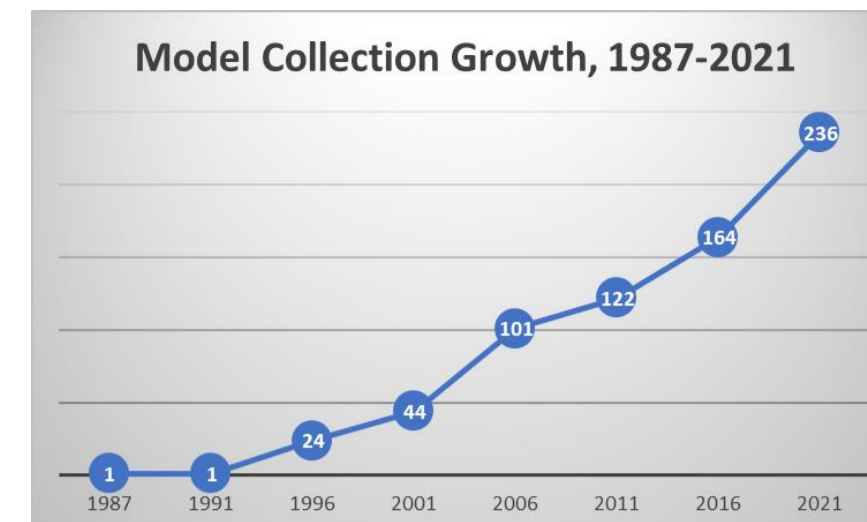
Top 5 Most Used Models	Date Added	Uses	Cost Per Use
Disarticulated half-skeleton.	11/8/2006	541	\$1.38
Muscular leg.	4/27/1994	476	\$1.25
Six-part muscular anatomy of the arm and shoulder	6/12/2007	441	\$1.07
Premier skull.	5/9/2005	421	\$0.59
Six-part muscular anatomy of the arm and shoulder	6/10/2005	405	\$1.08

Laupus Library has access to several e-anatomy resources:

- Acland's Video Atlas of Human Anatomy
- Anatomy Atlases
- Anatomy.tv (aka Primal Pictures)
- e-Anatomy: Interactive Anatomy Atlas
- Human Anatomy Online
- Visible Body
- 3D Organon VR Anatomy – in our new VR lab
- Sharecare VR – in our new VR lab

Patrons can also use our 65" Ideum Touch Table to access Visible Body and Anatomy.tv in the library.

Laupus Library Data



AAHSL Survey Data

