

A satellite image of Hurricane Irene, showing a large, swirling cloud system over the Atlantic Ocean. The hurricane's eye is visible in the center, surrounded by dense, white clouds. The surrounding ocean is dark blue, and some landmasses are visible on the left side of the frame.

# 3<sup>rd</sup> Annual NCEM-ECU Hurricane Workshop

**In the Mist of the Storm – Hurricane Irene  
“ A Working Team”**

**Ann Keyes – Emergency Management Director**

**Washington County Emergency Management  
Plymouth, North Carolina**

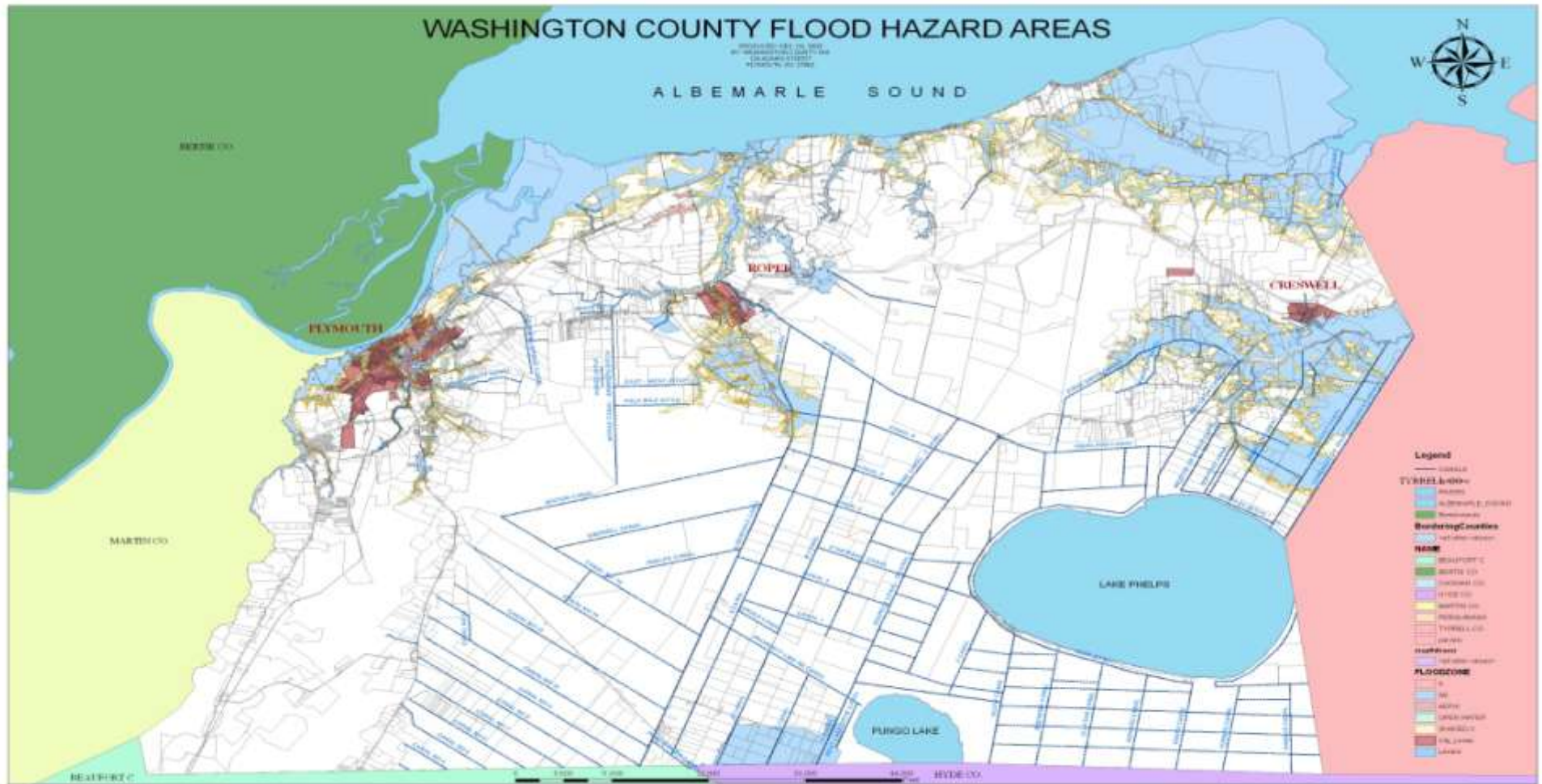
# Presentation Overview

- Washington County Geography
- Preplanning
- Emergency Protective Measures
- Response
- Recovery

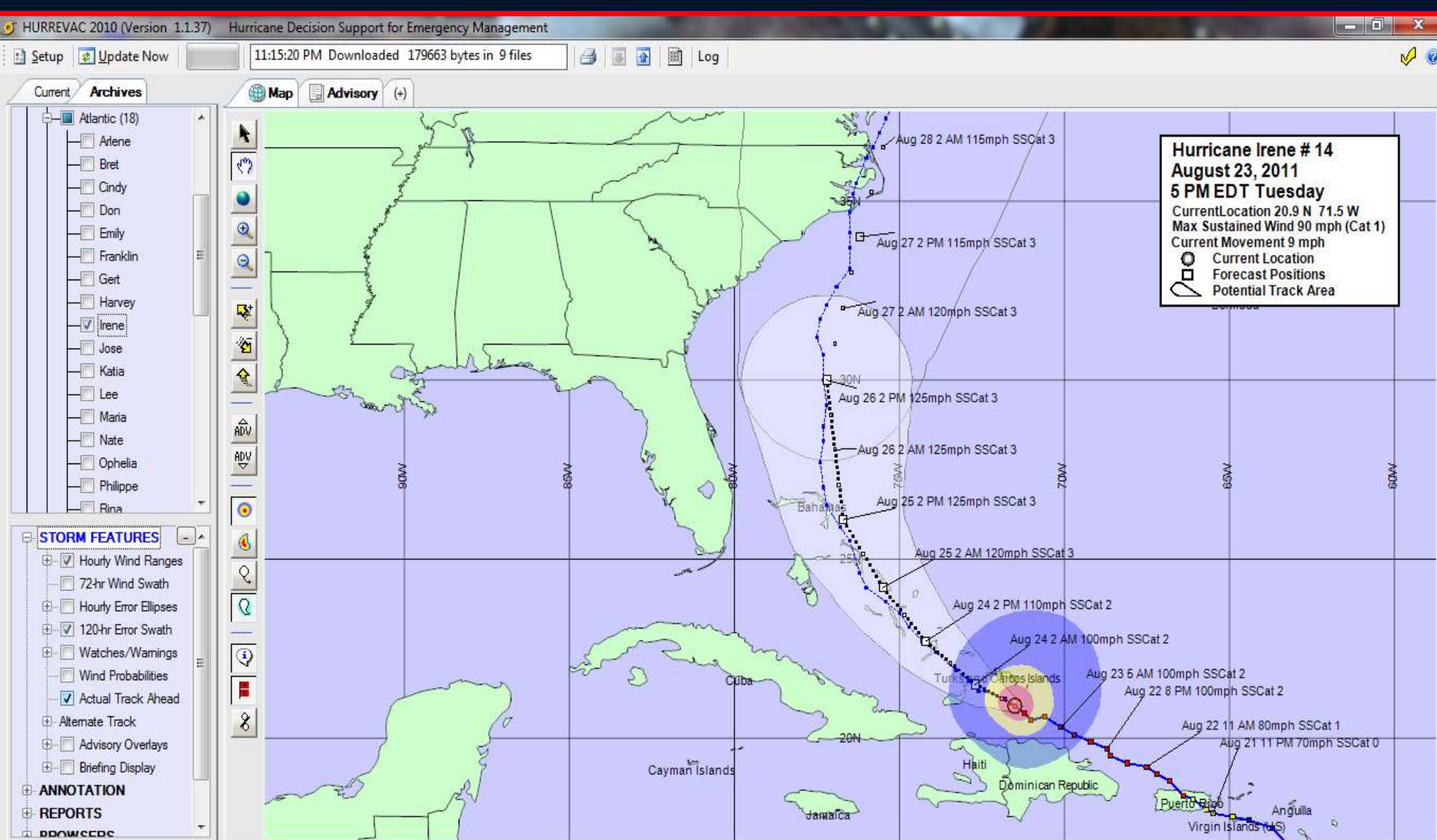




# Washington County Geography



# Official Forecast Track – 8/23/2011 1700 hours





# Preplanning

- On August 25, 2012, Washington County Emergency Management hosted a pre-hurricane briefing with all response agencies and private partners;
- At this meeting, the attending agencies reviewed their duties and responsibilities in the plan, declaring a state of emergency and resource needs;
- County Receiving and Distribution Point was addressed and trained county staff and other volunteers were appointed to work at the CRDP;
- Points of Distribution (POD) were addressed;
- Emergency roadway clearance and flooding issues addressed;
- Special needs/non-english speaking populace addressed.

# Washington County Emergency Protective Measures

- On August 26, 2011, Washington County fully activated the EOC at 0600 hours to coordinate response efforts in the county;
- CERT Teams members out in the county assisting the citizens with needs;
- Special needs populace contacted to identify any needs;
- CART TEAM activated;
- HAM Radio activated;
- Damage Assessment Teams placed on standby;
- Washington County Jail was evacuated and inmates transported to Edgecombe, Wilson and Nash counties.



# Response

- Major flooding in the County (Creswell and some areas in Plymouth);
- Sustained high winds over an extended period of time;
- Damage to infrastructure caused power outages throughout the county;
- The rainfall and standing flood waters vastly increased the number of mosquito breeding sites thereby creating the possibility of mosquito borne illnesses;
- Washington County EMS & Law Enforcement prepared to respond in flooded areas.





# Landfall and The Impacts – Flooding





# Landfall and the Impacts – Flooding





# Response – Briefing and Public Information

- Decision makers and agency representatives were briefed three times a day at the EOC ;
- Fire departments, CERT Teams and the donations management teams briefed the EOC every three hours;
- Fire departments and CERT teams performed emergency debris clearance and conducted welfare checks ;
- Media Representation was present at all briefings;
- First Call Alerting System was used to keep citizens informed.





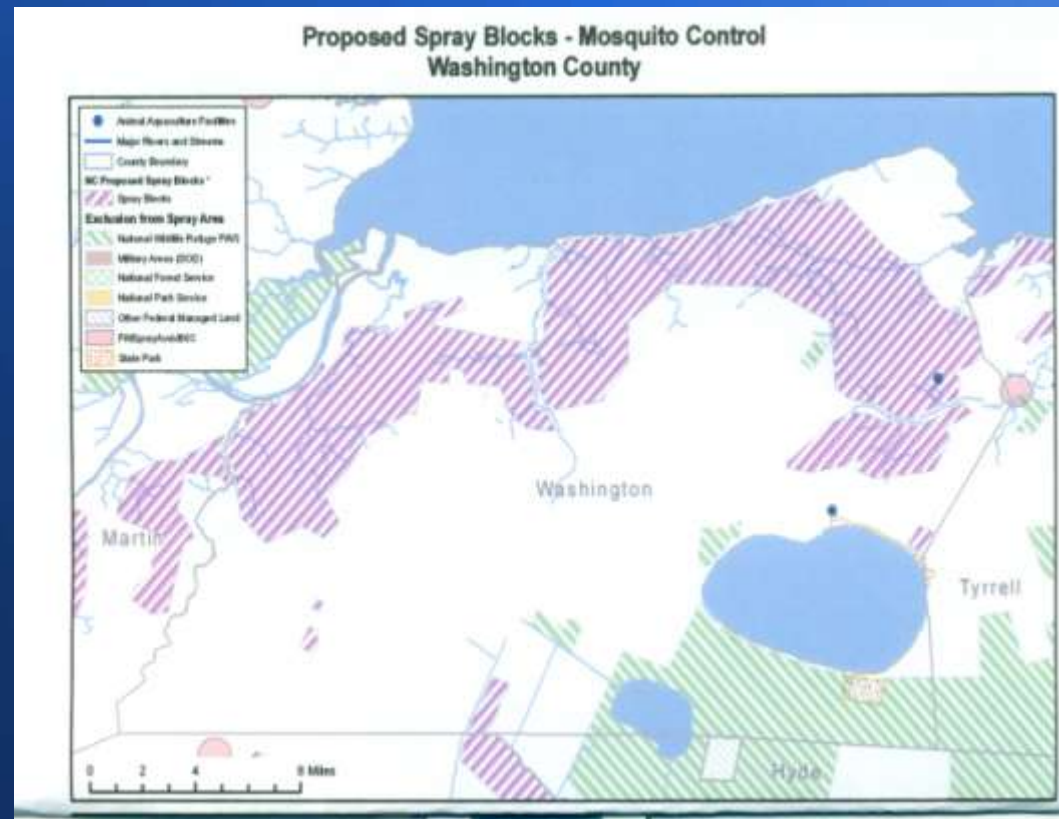
# Recovery – Debris Removal

- NC DOT's Subcontractor - Crowder Gulf removed all vegetative debris on state maintained roadways for Washington County
- Debris removal was handled by a local contractor for the Towns of Plymouth, Roper and Creswell;
- C & D debris was collected at the local landfill.



# Recovery – Vector Control

- Washington County had an active mosquito control program already in place , therefore required data needed to complete the process to conduct aerial spraying for mosquito control was minimal.
- In some areas (Creswell) of the county the mosquito landing counts were in excess of 50 mosquitoes per minute. More than 47,000 acres were sprayed in the county.



# Lessons Learned/Opportunities to Improve

- Choose Damage Assessment Team Leaders wisely;
- Delegation of duties;
- Plan C for Plan B;
- Expect the unexpected.





**Questions?**