

# PROFESSIONALLY PINCHING PENNIES



Tina Stepp, Jackie Case, Wm. Joseph Thomas



# PROFESSIONALLY PINCHING PENNIES: A VIEW FROM THE PUBLIC LIBRARY

Tina Stepp, Director, Robeson Co. Public Library

# Ways to Pinch Pennies



- Personnel Options
- Inform Public
- Ask for Donations
- Collaborate with other Agencies
- Be Creative

# Personnel Options



- Hiring Freeze
- Cross Training
- Volunteers
- Community Service

# Inform Public



- Speaker at organizations & clubs
  - ▣ DAR & Book Clubs
  - ▣ Rotary & Kiwanis
- Weekly article in paper
  - ▣ Memorials & Honorees
  - ▣ 117 Citizens

# Ask for Donations



- Special Projects Coordinator
- Grants
- Publishers - 1,200 books
- Authors - 1,640 books
- Books, office supplies, craft material
- Monetary

# Collaborate with other Agencies



- Employment Security Commission
- Givens Performing Arts
- Carolina Civic Center
- Robeson Community College

# Be Creative



- Job Seekers Desk
- Themed Book Displays
- Fundraisers



# Not Really the End, Just the Beginning

**Tina Stepp**

**[tstepp@robesoncountylibrary.org](mailto:tstepp@robesoncountylibrary.org)**

**910-738-4859**





# PROFESSIONALLY PINCHING PENNIES: A VIEW OF THE COMMUNITY COLLEGE LIBRARIES

Jackie Case, Director of Library Services, WTCC

# Historical Perspective

## Annual Full Time Equivalent (FTE)

| <b>Academic Year</b>    | <b>FTE</b>    | <b>Percentage Change</b> |
|-------------------------|---------------|--------------------------|
| <b>1998-1999</b>        | <b>7,745</b>  | <b>+ 13.0%</b>           |
| <b>1999-2000</b>        | <b>8,292</b>  | <b>+ 7.0%</b>            |
| <b>2000-2001</b>        | <b>8,550</b>  | <b>+ 3.1%</b>            |
| <b>2001-2002</b>        | <b>9,150</b>  | <b>+ 7.0%</b>            |
| <b>2002-2003</b>        | <b>9,757</b>  | <b>+ 6.6%</b>            |
| <b>2003-2004</b>        | <b>10,047</b> | <b>+ 2.9%</b>            |
| <b>2004-2005</b>        | <b>10,377</b> | <b>+ 3.2%</b>            |
| <b>2005-2006</b>        | <b>10,809</b> | <b>+ 4.1%</b>            |
| <b>2006-2007</b>        | <b>11,166</b> | <b>+ 3.3%</b>            |
| <b>2007-2008</b>        | <b>12,296</b> | <b>+ 10.1%</b>           |
| <b>2008-2009</b>        | <b>16,089</b> | <b>+ 13.0%</b>           |
| <b>2009-2010 (Fall)</b> | <b>7,154</b>  |                          |

# Library Budget Cuts

- Community College Libraries received an **average** of a 25% cut to the book budget

|                    |     |                   |
|--------------------|-----|-------------------|
| □ Central Piedmont | 41% | <b>FTE 19,961</b> |
| □ Fayetteville     | 39% | <b>FTE 11,719</b> |
| □ Wake Tech        | 37% | <b>FTE 16,089</b> |
| □ Cape Fear        | 37% | <b>FTE 10,074</b> |
| □ Guilford         | 37% | <b>FTE 12,944</b> |

- WTCC's Budget is \$111K for 4 libraries
- Times are very tough!



# Staffing

Along with the budget cuts came a freeze on hiring. We have all made accommodations to work through this, but as Herbert S. White noted in “Library Turf,” Library Journal, April 15, 1985,

**“ ..any success achieved in the process of work absorption only leads to a further round of budget cuts...”**

and further

**“Librarians have become so good at absorbing and minimizing the impact of budget cuts that hardly anyone notices.”**

This is where we need to be **strong** Advocates for the Library!

# Materials and Selection: Books

- Wake Tech is evaluating more electronic databases and will purchase less books.
- Gaston College is having a “Book Shower” for its new East Campus Library. **--Harry Cooke, Director of Libraries**
- Stanly Community College has put out the word to Faculty and Staff that the library would love the books they have finished reading. **--Erin Allen, Director, LRC**

- Wake Tech CC has become a huge fan of the Annual Wake County Public Library Book Sale. Last year we were fortunate to receive approximately \$60,000 worth of new and used books.



# Materials and Selection: Periodicals

- At Isothermal CC serials have been cut along with the New York Times and Wall Street Journal as well as many journals and magazines.—**Charles Wiggins, Director of Library Services**
- Wake Tech has cut its subscriptions down to 14 titles.





# Materials and Selection: Electronic Resources

Looking for the most effective resources:


- ❑ Credo Reference (450 Reference titles)
- ❑ Carolina Consortium deals: Big thanks to Tim Bucknall for helping all of us hold the line on rising costs
- ❑ At Cape Fear CC, Catherine Lee, Library Director, has contacted vendors, such as ProQuest, to see if she could get an adjusted invoice. The vendors were willing to help.
- ❑ If we did not have access to NCLIVE we would be in a dismal situation. As Randy Candelaria at Forsyth Tech CC says “(it) has helped make the lean times a bit more tolerable.”

# Computers and Printing

Student printing is a major issue in most community college libraries. Several including Wake Tech have taken the first step toward controlling the issue by requiring students to log onto Library computers using their BlackBoard ID's and Passwords.

- ❑ Pay-for-Print programs
  - ❑ PaperCut/ MyPC
  - ❑ Envisionware
  - ❑ Pharos
  - ❑ VendPrint
- ❑ Adding Duplexers to printers
  - ❑ Double sided copying



- 
- The photocopier can be set up to do two-sided printing, and some already have the duplexer available. The cost of the toner is less expensive and the toner makes more prints in the photocopier in comparison to a laser printer. It's faster, too! — **Cathy Campbell, Director of libraries, Craven Community College**
  - Durham Tech is sending their students print jobs to the photocopiers. This way students have to pay first before printing. —**Irene Laube, Library Director**

# Technical Services: Processing

- Cross Training cataloging, ILL, circulation: With staffing at a low level, your staff has a good working knowledge of other areas so they might assist students better
- Changed from Dewey to Library of Congress
  - Staff was cross trained and Dymo spine label machines expedited the process
  - Approximately 64% of the holdings have been converted at the Howell (Main) Library
  - Health Sciences, North Campus, and Western Wake have finished their conversions

- We prepare students for transferring University libraries while making our collections far easier to browse.
- We all need to see what our ILS can do for us. We realized that we were not automatically sending patron notices when a hold item was received.



# Thank you!



**Jackie Case**

**[jlcase@waketech.edu](mailto:jlcase@waketech.edu)**

**919-866-5649**



# PROFESSIONALLY PINCHING PENNIES: ECONOMIC IMPACTS ON TECH SERVICES AT EAST CAROLINA UNIVERSITY

Joseph Thomas, Collection Development Librarian

# We are not alone!

- Cornell University: Total budget reduction: \$3.5M; about \$1M from materials
- Emory University: 27 jobs cut, and > \$1M materials
- MIT: loss of \$1.4M
- UCLA: \$3M, \$2M from collections
- University of Florida: \$2.6M





# The Numbers:

- Reduction to Joyner's Total Budget: 18%
- Impact on Operating Budget\*: nearly 50%
- Impact on Joyner Acquisitions Budget: 32%
  - ▣ Last week, 7% of Acq funds restored
- Impact on staffing:
  - ▣ Loss of 10 positions (3 librarian, 7 staff)
  - ▣ Reduction in student worker hours: 30%



# Materials and Selection 1:

- ❑ Books: reduced \$335,000 (earlier reduction \$600K)
  - ▣ Approval Plan
  - ▣ Firm Orders
- ❑ Cancelled shelf-ready processing
- ❑ Media: reduction of separate fund
- ❑ Standing Orders:
  - ▣ Plan to cut 50%
  - ▣ So far, cancelled 275 titles



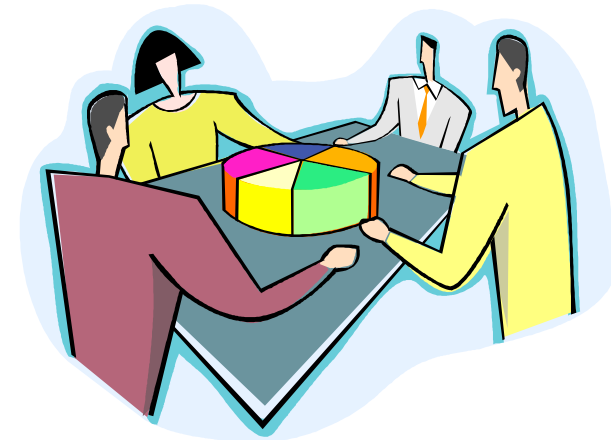
# Materials and Selection 2:

- Journals:
  - ▣ Print/microfilm: cancelled 501 total, 100 with no further access
  - ▣ Electronic: cut only duplicates
- Databases:
  - ▣ Cancellations
  - ▣ Sub changes (reduced users, changed vendors)
  - ▣ Reduced renewal rates
- Consortium Deals:
  - ▣ Taking permissible cancellation allowances
  - ▣ Consortia reps advocating flat renewals



# Communicating with Users:

- Announcements:
  - ▣ Email
  - ▣ Web page
- Faculty Senate: Dean Boyer, September 15
- Role of the liaison librarians:
  - ▣ Contact with faculty members in departments
  - ▣ Coordinate print periodicals review
  - ▣ Relay feedback about database lists
- Recording comments



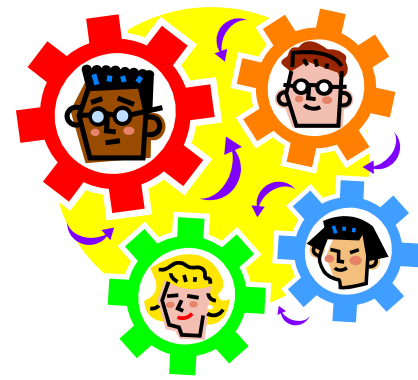
# Communicating with Vendors:

- Proactive
  - ▣ Contacting vendors ahead of renewal
  - ▣ Tell them what cuts we have received
  - ▣ Ask for their help
- Inviting people to come visit
  - ▣ EBSCO, Elsevier, IOP, ProQuest, Sage, Springer...



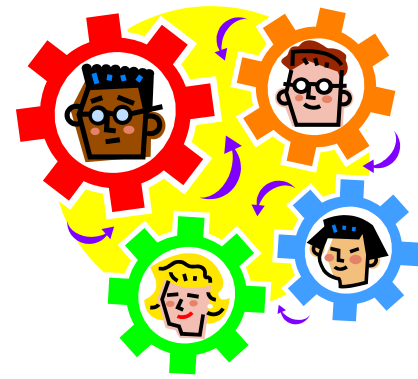
# Staffing and Workflows:

- Acquisitions: -1 staff
  - ▣ Gifts and Firm Orders
- Cataloging: -1 librarian
  - ▣ Continuing Resources Cataloger
- Collection Development: -1 librarian
  - ▣ But added half-time Fellow
- Serials and Electronic Resources
  - ▣ Shift to electronic subs sped up



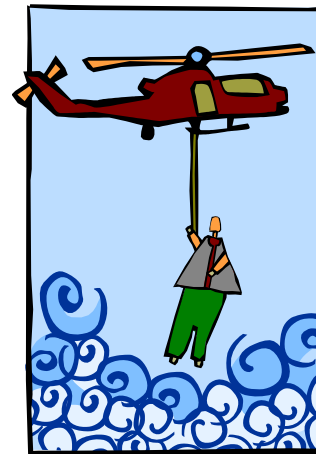
# Staffing and Workflows:

- NEW Integrated Library System
- Institutional Repository
- Changes in tools, eg., procedures wiki
- Cross-training:
  - ▣ One staff member to ILL
  - ▣ One staff member to a reference desk



# Recovery Planning:

- Plan for changes in staffing and workflows
- Plan for changes in collections
  - ▣ Strengthen consortia
- Library advocacy
  - ▣ With students
  - ▣ With department faculty
  - ▣ With campus administration
  - ▣ At the state level





# Questions? Feel free to get in touch!



**Joseph Thomas**  
**thomasw@ecu.edu**  
**252-737-2728**

