



Quantitative characterization of turbidity by radiative transfer based reflectance imaging

PENG TIAN,^{1,2,3} CHENG CHEN,² JIAHONG JIN,^{1,3} HENG HONG,⁴
JUN Q. LU,^{1,2} AND XIN-HUA HU^{1,2,*}

¹*Institute for Advanced Optics, Hunan Institute of Science and Technology, Yueyang, Hunan 414006, China*

²*Department of Physics, East Carolina University, Greenville, NC 27858, USA*

³*School of Physics & Electronics, Hunan Institute of Science and Technology, Yueyang, Hunan 414006, China*

⁴*Department of Pathology and Laboratory Science, Brody School of Medicine, East Carolina University, Greenville, NC 27858, USA*

*hux@ecu.edu

Abstract: A new and noncontact approach of multispectral reflectance imaging has been developed to inversely determine the absorption coefficient of μ_a , the scattering coefficient of μ_s and the anisotropy factor g of a turbid target from one measured reflectance image. The incident beam was profiled with a diffuse reflectance standard for deriving both measured and calculated reflectance images. A GPU implemented Monte Carlo code was developed to determine the parameters with a conjugate gradient descent algorithm and the existence of unique solutions was shown. We noninvasively determined embedded region thickness in heterogeneous targets and estimated *in vivo* optical parameters of nevi from 4 patients between 500 and 950nm for melanoma diagnosis to demonstrate the potentials of quantitative reflectance imaging.

© 2018 Optical Society of America under the terms of the [OSA Open Access Publishing Agreement](#)

OCIS codes: (170.0110) Imaging systems; (120.5700) Reflection; (290.4210) Multiple scattering; (170.6510) Spectroscopy, tissue diagnostics.

References and links

1. H. C. van de Hulst, *Multiple light scattering: tables, formulas, and applications* (Academic Press, 1980).
2. P. Lemaïllet, C. C. Cooksey, J. Hwang, H. Wabnitz, D. Grosenick, L. Yang, and D. W. Allen, "Correction of an adding-doubling inversion algorithm for the measurement of the optical parameters of turbid media," *Biomed. Opt. Express* **9**(1), 55–71 (2018).
3. B. Guo, Y. Wang, C. Peng, H. Zhang, G. Luo, H. Le, C. Gmachl, D. Sivco, M. Peabody, and A. Cho, "Laser-based mid-infrared reflectance imaging of biological tissues," *Opt. Express* **12**(1), 208–219 (2004).
4. T. Ktaczky, M. Rahman, V. Mack, K. Sokolov, J. Rogers, R. Richards-Kortum, and M. Descour, "High resolution, molecular-specific, reflectance imaging in optically dense tissue phantoms with structured-illumination," *Opt. Express* **12**(16), 3745–3758 (2004).
5. D. Roblyer, R. Richards-Kortum, K. Sokolov, A. K. El-Naggar, M. D. Williams, C. Kurachi, and A. M. Gillenwater, "Multispectral optical imaging device for *in vivo* detection of oral neoplasia," *J. Biomed. Opt.* **13**(2), 024019 (2008).
6. H. M. Leung and A. F. Gmitro, "Fluorescence and reflectance spectral imaging system for a murine mammary window chamber model," *Biomed. Opt. Express* **6**(8), 2887–2894 (2015).
7. N. Dimitriadis, B. Grychtol, M. Theuring, T. Behr, C. Sippel, and N. C. Deliolanis, "Spectral and temporal multiplexing for multispectral fluorescence and reflectance imaging using two color sensors," *Opt. Express* **25**(11), 12812–12829 (2017).
8. A. Esteva, B. Kuprel, R. A. Novoa, J. Ko, S. M. Swetter, H. M. Blau, and S. Thrun, "Dermatologist-level classification of skin cancer with deep neural networks," *Nature* **542**(7639), 115–118 (2017).
9. B. Fei, G. Lu, X. Wang, H. Zhang, J. V. Little, M. R. Patel, C. C. Griffith, M. W. El-Diery, and A. Y. Chen, "Label-free reflectance hyperspectral imaging for tumor margin assessment: a pilot study on surgical specimens of cancer patients," *J. Biomed. Opt.* **22**(8), 1–7 (2017).
10. M. Pilz, S. Honold, and A. Kienle, "Determination of the optical properties of turbid media by measurements of the spatially resolved reflectance considering the point-spread function of the camera system," *J. Biomed. Opt.* **13**(5), 054047 (2008).

11. P. B. Jones, H. K. Shin, D. A. Boas, B. T. Hyman, M. A. Moskowitz, C. Ayata, and A. K. Dunn, "Simultaneous multispectral reflectance imaging and laser speckle flowmetry of cerebral blood flow and oxygen metabolism in focal cerebral ischemia," *J. Biomed. Opt.* **13**(4), 044007 (2008).
12. H. Cen and R. Lu, "Optimization of the hyperspectral imaging-based spatially-resolved system for measuring the optical properties of biological materials," *Opt. Express* **18**(16), 17412–17432 (2010).
13. E. Vitkin, V. Turzhitsky, L. Qiu, L. Guo, I. Itzkan, E. B. Hanlon, and L. T. Perelman, "Photon diffusion near the point-of-entry in anisotropically scattering turbid media," *Nat. Commun.* **2**, 587 (2011).
14. S. F. Bish, N. Rajaram, B. Nichols, and J. W. Tunnell, "Development of a noncontact diffuse optical spectroscopy probe for measuring tissue optical properties," *J. Biomed. Opt.* **16**(12), 120505 (2011).
15. S. Kawauchi, I. Nishidate, Y. Uozumi, H. Nawashiro, H. Ashida, and S. Sato, "Diffuse light reflectance signals as potential indicators of loss of viability in brain tissue due to hypoxia: charge-coupled-device-based imaging and fiber-based measurement," *J. Biomed. Opt.* **18**(1), 015003 (2013).
16. D. Abookasis, B. Volkov, and M. S. Mathews, "Closed head injury-induced changes in brain pathophysiology assessed with near-infrared structured illumination in a mouse model," *J. Biomed. Opt.* **18**(11), 116007 (2013).
17. B. S. Nichols, A. Llopis, G. M. Palmer, S. S. McCachren 3rd, O. Senlik, D. Miller, M. A. Brooke, N. M. Jokerst, J. Geradts, R. Greenup, and N. Ramanujam, "Miniature spectral imaging device for wide-field quantitative functional imaging of the morphological landscape of breast tumor margins," *J. Biomed. Opt.* **22**(2), 026007 (2017).
18. N. Joshi, C. Donner, and H. W. Jensen, "Noninvasive measurement of scattering anisotropy in turbid materials by nonnormal incident illumination," *Opt. Lett.* **31**(7), 936–938 (2006).
19. P. Ghassemi, L. T. Moffatt, J. W. Shupp, and J. C. Ramella-Roman, "A new approach for optical assessment of directional anisotropy in turbid media," *J. Biophotonics* **9**(1-2), 100–108 (2016).
20. J. Q. Lu, X. H. Hu, and K. Dong, "Modeling of the rough-interface effect on a converging light beam propagating in a skin tissue phantom," *Appl. Opt.* **39**(31), 5890–5897 (2000).
21. X. Ma, J. Q. Lu, and X. H. Hu, "Effect of surface roughness on determination of bulk tissue optical parameters," *Opt. Lett.* **28**(22), 2204–2206 (2003).
22. X. Ma, J. Q. Lu, H. Ding, and X. H. Hu, "Bulk optical parameters of porcine skin dermis at eight wavelengths from 325 to 1557 nm," *Opt. Lett.* **30**(4), 412–414 (2005).
23. C. Chen, J. Q. Lu, K. Li, S. Zhao, R. S. Brock, and X. H. Hu, "Numerical study of reflectance imaging using a parallel Monte Carlo method," *Med. Phys.* **34**(7), 2939–2948 (2007).
24. X. Chen, Y. Feng, J. Q. Lu, X. Liang, J. Ding, Y. Du, and X. H. Hu, "Fast method for inverse determination of optical parameters from two measured signals," *Opt. Lett.* **38**(12), 2095–2097 (2013).
25. X. Liang, M. Li, J. Q. Lu, C. Huang, Y. Feng, Y. Sa, J. Ding, and X. H. Hu, "Spectrophotometric determination of turbid optical parameters without using an integrating sphere," *Appl. Opt.* **55**(8), 2079–2085 (2016).
26. W. W. Hager and H. Zhang, "A new conjugate gradient method with guaranteed descent and an efficient line search," *SIAM J. Optim.* **16**(1), 170–192 (2005).
27. Y.-H. Dai and C.-X. Kou, "A nonlinear conjugate gradient algorithm with an optimal property and an improved Wolfe line search," *SIAM J. Optim.* **23**(1), 296–320 (2013).
28. C. Chen, J. Q. Lu, H. Ding, K. M. Jacobs, Y. Du, and X. H. Hu, "A primary method for determination of optical parameters of turbid samples and application to intralipid between 550 and 1630 nm," *Opt. Express* **14**(16), 7420–7435 (2006).
29. Z. Song, K. Dong, X. H. Hu, and J. Q. Lu, "Monte Carlo simulation of converging laser beams propagating in biological materials," *Appl. Opt.* **38**(13), 2944–2949 (1999).
30. H. Ding, J. Q. Lu, K. M. Jacobs, and X. H. Hu, "Determination of refractive indices of porcine skin tissues and intralipid at eight wavelengths between 325 and 1557 nm," *J. Opt. Soc. Am. A* **22**(6), 1151–1157 (2005).
31. G. Kortum, *Reflectance spectroscopy. Principles, methods, applications* (Springer, 1969).
32. V. R. Weidner and J. J. Hsia, "Reflection properties of pressed polytetrafluoroethylene powder," *J. Opt. Soc. Am.* **71**(7), 856–861 (1981).
33. S. L. Jacques, J. C. Ramella-Roman, and K. Lee, "Imaging skin pathology with polarized light," *J. Biomed. Opt.* **7**(3), 329–340 (2002).
34. R. Novak, "Loop Optimization for Divergence Reduction on GPUs with SIMT Architecture," *IEEE Trans. Parallel Distrib. Syst.* **26**(6), 1633–1642 (2015).
35. C. M. Balch, J. E. Gershenwald, S. J. Soong, J. F. Thompson, M. B. Atkins, D. R. Byrd, A. C. Buzaid, A. J. Cochran, D. G. Coit, S. Ding, A. M. Eggermont, K. T. Flaherty, P. A. Gimotty, J. M. Kirkwood, K. M. McCormick, M. C. Mihm, Jr., D. L. Morton, M. I. Ross, A. J. Sober, and V. K. Sondak, "Final version of 2009 AJCC melanoma staging and classification," *J. Clin. Oncol.* **27**(36), 6199–6206 (2009).
36. J. Q. Lu, C. Chen, D. W. Pravica, R. S. Brock, and X. H. Hu, "Validity of a closed-form diffusion solution in P1 approximation for reflectance imaging with an oblique beam of arbitrary profile," *Med. Phys.* **35**(9), 3979–3987 (2008).

1. Introduction

Quantitative characterization of turbidity attracts intense research interests for tasks ranging from materials analysis to disease diagnosis [1, 2]. Imaging reflected light at multiple wavelengths provides an approach of big data ($> 10^4$ signals) for such characterization.

Benefits include noninvasive and noncontact nature of measurement and simplicity of instrumentation given rapid progress in sensor technology. Most approaches of reflectance imaging realized to date, however, rely on pattern analysis to characterize targets for recognition and classification [3–9]. While these methods require no modeling of light-matter interaction, their applications depend sensitively on configurations of illumination and detection. Simplified models based on Beer-Lambert law or diffusion approximations have been developed to inversely determine optical parameters of absorption coefficient μ_a and reduced scattering coefficient μ_s' [10–17]. Improvement with the radiative transfer (RT) theory has been reported for inverse determination of μ_a , scattering coefficient μ_s and anisotropy factor g of homogeneous turbid samples [18, 19]. Despite these advances, optical model based reflectance imaging is far from the point for translation into practical systems to characterize turbidity according to the RT theory [1]. First, accurate and fast general-purpose methods need to be established for imaging system calibration and modeling spatial distribution of reflected light that allow robust inverse solutions. It is also critically important to develop effective algorithms for determination of μ_a , μ_s and g from the measured image. Finally, a new method should have the capacity to determine spatial distribution of optical and size parameters in heterogeneous turbid targets, which is necessary in applications including diagnosis and delineate normal and cancerous tissues.

In this report, we present a new approach of reflectance imaging that combines multispectral image acquisition, RT theory based Monte Carlo (MC) simulations of light transport [20–23], graphics processing unit (GPU) implementation of MC simulation [24, 25] and a conjugate gradient [26, 27] based inverse algorithm to retrieve a set of target parameters P . The axial-symmetric Henyey–Greenstein function $p_{HG}(\cos\theta)$ was used as the scattering phase function that is fully characterized by the anisotropy factor g [1]. Thus the optical parameters of a turbid target can be collectively represented by the notation $P = \{\mu_a, \mu_s, g\}$ for a homogeneous phantom or $P = \{\mu_{a1}, \mu_{s1}, g_1, \mu_{a2}, \mu_{s2}, g_2\}$ for a 2-zone heterogeneous phantom. Furthermore, size parameters like thickness D for an embedded zone in the 2-zone phantoms can be included in the inverse determination to yield morphology information. To validate the new method, measurements with homogeneous turbid phantoms have been carried out for comparison with the parameters of thin disk samples made of similar materials by a method of integrating sphere measurement and MC based inverse algorithm [28]. Multispectral reflectance images have been acquired from 4 patients suspected of cutaneous melanoma to estimate optical parameters and examine their potentials for cancer diagnosis.

2. Methods

2.1 Measurement of reflectance and profile images

A multispectral system has been constructed to image light reflected from a target illuminated with an 175W xenon fiber optic light source (ASB-XE-175EX, Spectral Products). The beam output from the fiber was collimated and incident on the target with $2w = 14\text{mm}$ in diameter and about 2° in diverging angle. A steel stencil S of stripes lines was inserted in front of the collimating lens L to change the incident beam profile from top-hat to a grating pattern, as shown in Fig. 1. Interference filters of 10nm in bandwidth were assembled on two rotating wheels to produce monochromatic illumination between 500 to 950nm for phantom study in steps of around 20nm. A camera lens of 25mm in focal length and 20mm in aperture diameter A was used to relay the light distribution at the target surface to the sensor of a cooled 14-bit cooled CCD camera (KX32ME, Apogee Instruments). The illumination arm was set at an incident angle of θ_0 from the normal of target surface while the imaging arm was oriented along the normal to reduce contribution of specular reflection.

The imaging system was first aligned by adjusting h in Fig. 1(a) to ensure a conjugate relation between the object plane of $z = 0$ at the target surface and the image plane of camera sensor, which yielded the maximum contrast in acquired images with the grating pattern. Then reflection images $I_r(x, y; \lambda)$ were acquired from a sample target at selected wavelengths

where (x, y) are the pixel coordinates of the camera sensor corresponding to the target surface of $(x, y, 0)$ in the field-of-view (FOV). Afterward, the target was replaced with a diffuse reflectance standard to measure the incident beam profile as $I_s(x, y; \lambda)$. Two standards were used with calibrated reflectance $R_s(\lambda)$ centered at 40% or 80% supplied by vendor (SRS-40-020, SRS-80-020, Labsphere). In each multispectral measurement, background images of $I_{rb}(x, y)$ or $I_{sb}(x, y)$ were also acquired with the incident beam blocked. The measured reflectance images $R_m(x, y; \lambda)$ and beam profile images $S_m(x, y; \lambda)$ were obtained as follows

$$R_m(x, y; \lambda) = \frac{I_r(x, y; \lambda) - I_{rb}(x, y; \lambda)}{I_{\max, s}(\lambda)} R_s(\lambda), \quad (1)$$

and

$$S_m(x, y; \lambda) = \frac{I_s(x, y; \lambda) - I_{sb}(x, y; \lambda)}{I_{\max, s}(\lambda)}, \quad (2)$$

where $I_{\max, s} = \max[I_s(x, y; \lambda) - I_{sb}(x, y)]$ is used to normalize both I_r and I_s . The measured images were further cropped and pixel binned to produce a 30mm FOV divided into a 101x101 grid for simulation described below. Figures 1(b) to 1(d) present photos of reflectance standard, phantoms and examples of $I_r(x, y; \lambda)$ and $I_s(x, y; \lambda)$ before binning.

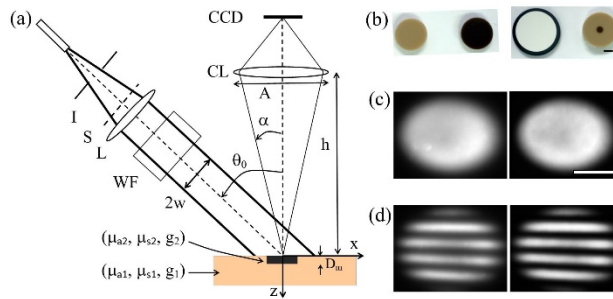


Fig. 1. (a) Schematic of reflectance imaging and phantom: I: iris; S: stencil; L: collimating lens; WF: wavelength filter wheels; w: beam radius; CL: camera lens; A: lens aperture diameter; h: lens-target distance; (b) photos of (from left to right): two homogeneous phantoms of light and dark appearances, an 80% diffuse reflectance standard and a melanoma phantom; (c) reflection images of a homogeneous phantom of light appearance (I_r : left) and an 80% diffuse reflectance standard (I_s : right) at $\theta_0 = 45^\circ$ and $\lambda = 620\text{nm}$ without stencil for top-hat beam profile; (d) similar as (c) with stencil for grating beam profile. Bars = 10mm for photos in (b) and (c).

2.2 Calculation of reflectance images by Monte Carlo simulation

Modeling of light transport in a turbid target to obtain calculated reflectance image was carried out with an individual photon tracking MC (iMC) code by tracking individual photons according to the RT theory. The code has been developed on the basis of previous ones [20–25, 28, 29] that tracks photons in the finite volume of the target as depicted in Fig. 1(a). The iMC code was validated against the numerical solution of RT equation in the cases of homogeneous turbid phantoms [1] (data not shown). With the individual photon tracking design, the iMC code can be implemented for parallel computing by GPU and perturbation based inverse determination of optical parameters [24, 25].

We briefly describe the logic flow of the iMC code here for simulation of reflectance imaging with details of the algorithm and validation results given elsewhere [20, 24, 28, 29]. It first imports the measured profile $S_m(x, y; \lambda)$ of the incident beam to generate a proportional photon density distribution $\rho_i(x, y, 0; \lambda)$ at each grid point of the target surface or air-side of x-y plane at $z = 0$. Photons of total number N_0 are injected into the phantom to represent the

incident beam. N_0 needs to be large enough so that the pixel variances in calculated reflectance images are less than 1%. After removing specularly reflected photons from N_0 by the Fresnel equation for unpolarized light, a total pathlength L_a is obtained for each of remaining photons to be tracked in the turbid target before its first entry. The probability density of the $\{L_a\}$ set is an exponential function characterized by μ_a . Individual photon tracking then starts by updating free pathlength $L_{s,i+1}$ by another exponential probability density function by μ_s and propagation direction by $p_{HG}(\cos\theta)$ of single parameter g after i^{th} scattering event [24, 29]. Tracking ends for a photon when either its accumulated pathlength L_s exceeds L_a or it exits the target. At each interface between air and the target or different zones of a heterogeneous target, the same Fresnel equation is used to determine the fate of tracked photon for reflection or refraction [23]. The refractive index n of the target was set to a constant value of $n = 1.40$ based on the measured value at $\lambda = 633\text{nm}$ for the silicone-based phantoms used in this study. The n values were determined using a coherent reflectance method [30] between 500 and 950nm and its variation in the range was found to be less than 4%.

The diffusely reflected photon density $\rho_r(x, y, 0_-; P)$ was determined from photons exiting the target on the air side where P is the optical parameter set as $P = \{\mu_a, \mu_s, g\}$ for homogeneous phantoms and $P = (\mu_{a1}, \mu_{s1}, g_1; \mu_{a2}, \mu_{s2}, g_2)$ for 2-zone heterogeneous phantoms. Those photons registered for ρ_r need to locate inside the FOV defined by the camera lens at $z = -h$ and the solid angle of viewing $\Delta\Omega(x, y, h)$ subtended by the lens of numerical aperture $NA = \sin\alpha$, as marked in Fig. 1(a). With ρ_i and ρ_r , we define the calculated reflectance image $R_c(x, y, -h; \lambda, P)$ as

$$R_c(x, y, -h; \lambda, P) = \frac{\rho_r(x, y, h; P)}{\rho_{\max,s}(\lambda)}, \quad (3)$$

where

$$\rho_{\max,s}(\lambda) = \max[\rho_i(x, y, 0_-; \lambda)], \quad (4)$$

In deriving Eq. (3), we assumed that the diffuse reflectance standard behaves as an ideal Lambertian reflector which is a very good approximation for small viewing angles [31, 32]. We verified the Lambertian behavior of the diffuse reflectance standards by measurement of the reflected light intensity recorded at the center region of the CCD sensor as a function of $\cos\theta_0$ for $40^\circ \leq \theta_0 \leq 80^\circ$, which was found to be linear with a slope proportional to the calibrated reflectance as expected.

2.3 Sample preparation and patient imaging

Two types of silicone based turbid suspensions with light and dark appearance have been prepared for making phantoms with TiO_2 powders (213581000, Acros Organics) and different concentrations of brown pigment powders (Pbr7, Kama Pigments) mixed in silicone polymer (RTV615A, MG Chemicals). The suspensions were stirred for 1 week to ensure homogeneity before casting and curing. Homogeneous turbid phantoms were prepared in cylindrical shaped molds of 40mm in outside diameter and 10mm in thickness. Multiple thin disk copies were made for each homogeneous phantom out of the same suspension with 18mm in diameter and 0.1 to 1mm in thickness for integrating sphere based measurements to determine their optical parameter set P [28]. In this method, the collimated transmittance was first measured with four thin disks of different thickness to determine the attenuation coefficient $\mu_t = \mu_a + \mu_s$. This was followed by the measurement of diffuse reflectance and transmittance from one disk sample. Finally, a MC code developed for the integrating sphere method was used to determine $P = (\mu_a, \mu_s, g)$ at different wavelengths [28]. These data allow calibration of the reflectance imaging method for P measurement with the homogeneous phantoms.

Heterogeneous phantoms of melanoma have also been made with the same two suspensions. The light suspensions were first cast into a mold to prepare host phantoms, each of which has the same outside diameter and thickness as the homogenous phantoms and a cylindrically shaped cavity of 8mm in diameter and variable depth D_m at the center. After curing, the dark suspension was filled into the cavity as the embedded region and pressed with a cover glass to ensure that the completed phantoms have flat surfaces and contain no visible air bubbles. Heterogeneous phantoms of three different D_m were selected for this study to investigate the feasibility of reflectance imaging method for noninvasive determination of D_m . Figure 1(b) shows one heterogeneous and two homogenous turbid phantoms.

To further examine the clinical potentials, we have acquired multispectral images from 4 patients of dysplastic melanocytic nevi in the Leo W. Jenkins Cancer Center under an IRB protocol approved by Brody school of Medicine, East Carolina University. For patient imaging, the interference filter wheels were replaced by a long-pass filter with the edge at 500nm and one of two liquid-crystal-tunable-filters (LCTF, VIS-07-20-STD-110, NIR-07-20-STD-110, CRI) of 10nm bandwidth to rapidly tune the wavelengths of incident beam during imaging with 15nm stepsizes. Figure 2(a) shows the patient imaging system with the incident beam angle of $\theta_0 = 45^\circ$. To reduce motion of FOV during imaging, a locking device was developed that consists of an optical window of 25mm in diameter at the end of illumination arm and a holding ring taped on the imaged skin site of patient as shown in Fig. 2(b). Before imaging, the optical window was coated with a very thin layer of clear ultrasound gel to ensure no-air contact with the patient skin. Each of illumination and imaging arms included a linear polarizer for acquiring cross-polarized reflection images of $I_r(x, y; \lambda)$ to reduce the light backscattered from superficial skin layers [33].

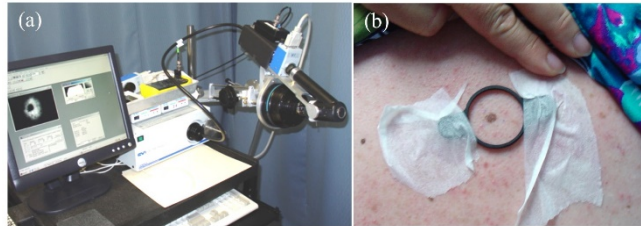


Fig. 2. (a) The reflectance imaging unit for patient imaging; (b) a holding ring taped on a patient's back.

3. Results

3.1 Effects of imaging parameters on the calculated reflectance image R_c

The measured and calculated reflectance images, R_m and R_c , defined in Eqs. (1) and (3), differ by the planes of light or photon distributions. The former was collected with the camera lens at $z = -h$ and the latter was calculated at $z = 0_-$. Since the imaging process in this study is noncoherent in nature and far from the diffraction limit, we assumed that the point-spread function of camera lens is shift-invariant and distortion-free. Hence the difference between R_m and R_c is mainly due to the variation of solid angle $\Delta\Omega(x, y, h)$ across FOV. While R_c can be simulated at $z = -h$ by eliminating the diffusely reflected photons exiting at $(x, y, 0_-)$ outside $\Delta\Omega(x, y, h)$, such an approach reduces significantly the registered photon numbers because of the very small solid angle ratio of $\Delta\Omega(x, y, h)/2\pi$, about 10^{-4} for $h \geq 400\text{mm}$, and requires large values of N_0 to reduce the pixel variances of R_c . To improve simulation speed, we investigated the h dependence of $R_c(x, y)|_h = R_c(x, y, -h; \lambda, P)$ of homogeneous phantoms for both beam profiles of top-hat and grating. The effects of incident angle θ_0 from 0° to 45° , beam radius w , lens aperture diameter A and optical parameter P have also been investigated on R_c with two sets of examples presented in Fig. 3.

In Fig. 3(a), linear profiles of $R_c(x, y)|_h$ collected by a camera lens were plotted against the x -axis with an ideal top-hat beam incident on a homogeneous phantom with $\theta_0 = 0^\circ$. For $h = 0.2\text{mm}$, the profile is obviously limited by the lens aperture of $A = 10\text{mm}$. But as h exceeds 16mm , $R_c(x, 0)|_h$ profiles become alike and the peak pixel value ratio of $R_c(0, 0)|_h / R_c(0, 0)|_{h=0.2\text{mm}}$ approaches to a constant of $S = 1.60$, as shown in Fig. 1(c). Similar results were obtained with grating beam profile as shown in Fig. 1(b) but S value increases to 1.86 as θ_0 increases to 45° . Collectively, these data show clearly that the image pattern is nearly independent of h for values larger than 100mm while the peak value of R_c increases with h monotonically in Fig. 3(c) with a slope approaching to 0 . Consequently, we define a scaling constant $S = R_c(x, y)|_h / R_c(x, y)|_{h=0}$ for $h = 400\text{mm}$ for obtaining $R_c(x, y, -h; \lambda, P)$ by $S \cdot R_c(x, y, 0; \lambda, P)$. Figures 3(a) and 3(b) display scaling examples for both incident beam profiles. We also studied the dependence of the S on different P and found the relative change of S to be less than 5% in the concerned parameter ranges (data not shown). Based on these results, MC simulations of $R_c(x, y; 0; \lambda, P)$ for this study were carried out at $h = 0$ and then scaled to $h = 400\text{mm}$ by multiplying with $S = 1.86$ for $\theta_0 = 45^\circ$ before comparison to R_m . This method drastically reduces the required values of N_0 by 4 orders of magnitude to about 1×10^8 and simulation time.

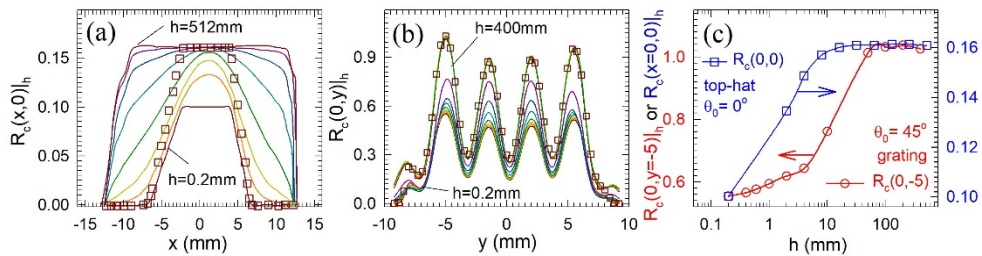


Fig. 3. The linear profiles of $R_c(x, y)|_h$ calculated with homogeneous phantoms and collected by the camera lens at different h represented by solid lines: (a) $P = (\mu_a = 1.00\text{mm}^{-1}, \mu_s = 5.00\text{mm}^{-1}, g = 0.75), \theta_0 = 0^\circ, w = 12.5\text{mm}$, ideal top-hat incident beam profile and $A = 10\text{mm}$; symbols represent $S \cdot R_c(x, 0)$ of $h = 0.2\text{mm}$ with $S = 1.60$; (b) $P = (\mu_a = 0.50\text{mm}^{-1}, \mu_s = 1.80\text{mm}^{-1}, g = 0.60), \theta_0 = 45^\circ, w = 10\text{mm}$, grating incident beam profile $S_m(x, y; \lambda)$ acquired from a dark phantom at $\lambda = 620\text{nm}$ and $A = 18\text{mm}$; symbols represent $S \cdot R_c(0, y)$ with $S = 1.86$; (c) h dependence of peak pixels of R_c in (a) at $x = 0, y = 0$ and in (b) at $x = 0, y = -5.0\text{mm}$. Other parameters: N_0 ranging between 1×10^8 and 1×10^{12} . The lines in (c) are for visual guide.

3.2 Rapid simulation of the reflectance image R_c by GPU implementation

The iMC code for $R_c(x, y, 0; \lambda, P)$ has been implemented in a CUDA (8.0, Nvidia) enabled GPU version for parallel executions on a GPU board (Tesla K20, Nvidia), which is denoted as iMC-GPU. In this code, photons injected into the target were tracked with a single-instruction-multiple-threads (SIMT) design. Compared to the single-instruction multiple-data (SIMD) paradigm, SIMT executes the programmatically equal code as different threads on GPU cores concurrently with data branching [34] using statistically independent sequences of random numbers. To improve performance, we grouped individual photon tracking to the SIMT based streaming architects. Before tracking starts, the total pathlength L_a were obtained for all injected photons which were then sorted into groups of similar L_a . The threads for tracking photons in the same group were submitted to and processed in the same streaming multiprocessor (SM) of the K20 boards that include 13 SMs of total 2496 cores. Each SM can handle up to 1920 threads or 10 threads per core. With this and other improvements over our earlier version [24], the current iMC-GPU code can have a speedup ranging between 30 to 50 relative to the single-CPU-core execution on a CPU of 3.4GHz (i7-3770, Intel). For $N_0 = 1 \times 10^8$, the wall-clock time for iMC-GPU simulation of one reflectance image of R_c of a

homogeneous phantom were 2.3s and 49s with $P = (0.64\text{mm}^{-1}, 0.66\text{mm}^{-1}, 0.96)$ and $(0.0088\text{mm}^{-1}, 1.29\text{mm}^{-1}, 0.36)$, respectively.

3.3 Study of the uniqueness of inverse solutions and the effect of the beam profile

The goal of reflectance imaging is to determine inversely the optical parameter set P and thickness of an embedded region from $R_m(x, y; \lambda)$. The inverse problem is defined here as an optimization problem for searching the minimum value δ_{\min} of an objective function δ for given λ and $n = 1.40$. The function δ given below is defined as the mean error between the measured and calculated images

$$\delta = \sqrt{\frac{1}{N_p} \sum_{x,y} H(x,y) \left| \frac{R_m(x,y;\lambda) - R_c(x,y,-h;\lambda,P)}{R_m(x,y;\lambda)} \right|^2} \quad (5)$$

where $R_c(x, y, -h; \lambda, P) = SR_c(x, y, 0_-; \lambda, P)$ as discussed in subsection 3.1 and the sum is taken over all pixels located at target surface of $(x, y, 0_-)$ with a weighing factor H and N_p is the total number of pixels with $H = 1$. The factor H is set to 0 if the pixel value of R_m is less than 5% of the maximum pixel value and 1 otherwise to exclude very low valued pixels that are in the peripheral region of the FOV because of low incident irradiance.

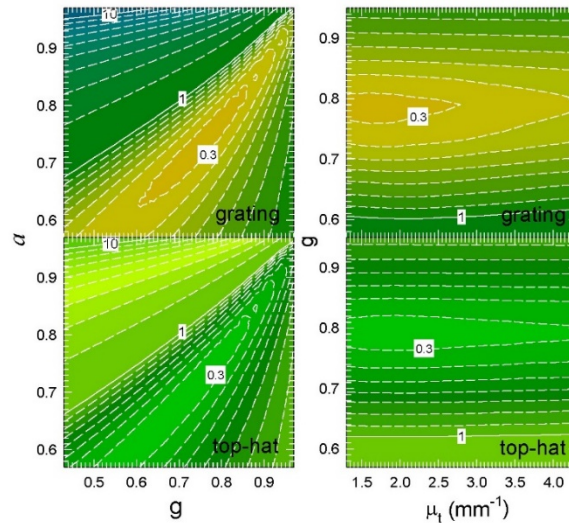


Fig. 4. The contour plots of the objective function δ with $\mu_t = 1.66\text{mm}^{-1}$ for the plots on the left and $a = 0.760$ for the plots on the right. The measure images $R_m(x, y; \lambda)$ were obtained from a dark homogeneous phantom with $\theta_0 = 45^\circ$ and $\lambda = 620\text{nm}$ of grating or top-hat beam profile.

For inverse solutions to converge or $\delta \leq \delta_{\min}$, we found that it is critical to use the beam profile image $S_m(x, y; \lambda)$ measured with a diffuse reflectance standard for calculating. The use of S_m instead of an analytical function and the same normalization scheme for R_m and R_c was essential for the inverse problems to have unique solutions. We first investigated the effect of incident beam profiles on the functional form of δ in the parameter space of (μ_t, a, g) with $a = \mu_s/\mu_t$ as the scattering albedo. Two profiles of top-hat and grating were investigated which are shown in Figs. 1(c) and 1(d). At each value of μ_t about 200 images of R_c were calculated with different values of $a = \mu_s/\mu_t$ and g to obtain a contour plot of δ against one measured image R_m .

With different μ_t we found that a unique solution or single minimum of δ exists for both beam profiles and Fig. 4 presents contour plots as examples for each profile. As can be seen from these plots that the grating profile produces a slightly steeper slope for δ to descend to

δ_{\min} and the parameter values obtained there are closer to the values determined by the integrating sphere based method. We attribute the advantage of grating profile over the top-hat to the larger variation in the reflectance values which makes δ more sensitive to the parameter change. For this reason, we chose the grating profile for subsequent study with phantoms while for patient imaging the top-hat profile was used for less sensitivity of R_m to patient's motion. To examine the convergence of the inverse algorithm with grating profile of incident beam, we also investigated the landscape of δ in the parameter space for additional homogeneous phantoms at selected wavelengths. About 2000 reflectance images were calculated in about 12 steps along each axis of (μ_t, a, g) to generate each two-dimensional contour map plot of δ shown in Fig. 5 against each R_m measured with a phantom of light appearance. By these data, we confirmed that a unique minimum exists for δ for the surveyed ranges of the parameters for either light or dark phantoms. These results indicate that the objective function δ depends most sensitively on a , less on g and least on μ_t .

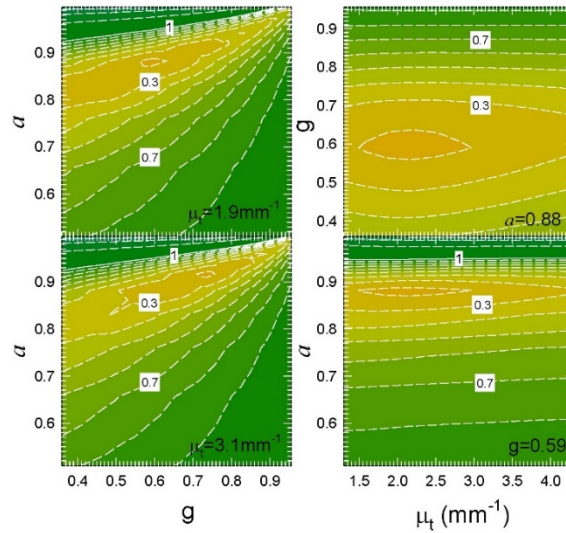


Fig. 5. The contour plots of δ obtained with the reflectance image measured from a light phantom sample with an incident beam of grating profile at $\theta_0 = 45^\circ$ and $\lambda = 500\text{nm}$.

3.4 Determination of P for homogeneous samples

For homogeneous phantoms, a nonlinear conjugate gradient (CG) algorithm [26, 27] was adopted to obtain $P = (\mu_a, \mu_s, g)$ from $R_m(x, y; \lambda)$ by iterated iMC-GPU simulations. In this algorithm, the solution P was obtained by iterating a trial solution vector of $\mathbf{p}_k = (\mu_{ak}, \mu_{sk}, g_k)$ of the following recurrence until $\delta \leq \delta_{\min}$

$$\mathbf{p}_{k+1} = \mathbf{p}_k + \alpha_k \mathbf{d}_k, \quad (6)$$

where $k = 0, 1, \dots$ is the iteration index, $\alpha_k > 0$ is the stepsize of iteration and δ_{\min} was set to 0.1. The search direction for k^{th} iteration \mathbf{d}_k is given by

$$\mathbf{d}_k = \begin{cases} -\mathbf{g}_k, & \text{if } k = 0 \\ -\mathbf{g}_k + \beta_{k-1} \mathbf{d}_{k-1}, & \text{if } k \geq 1 \end{cases}, \quad (7)$$

where $\mathbf{g}_k = \nabla \delta_k$ is the gradient of δ in the parameter space and β_k is a scalar update parameter to ensure convergence in a nonlinear inverse problem.

Initially introduced in [26], the following form of β_k was employed in our study [27]

$$\beta_k = \frac{\mathbf{g}_{k+1}^T \mathbf{y}_k}{\mathbf{d}_k^T \mathbf{y}_k} - \frac{|\mathbf{y}_k|^2 \mathbf{g}_{k+1}^T \mathbf{d}_k}{(\mathbf{d}_k^T \mathbf{y}_k)^2}, \quad (8)$$

where the superscript T indicates transpose and $\mathbf{y}_k = \mathbf{g}_{k+1} - \mathbf{g}_k$. After the direction \mathbf{d}_k is obtained, a strong Wolfe line search was performed to find α_k that satisfies the conditions below [27],

$$\delta(\mathbf{p}_k + \alpha_k \mathbf{d}_k) - f(\mathbf{p}_k) \leq \rho \alpha_k \mathbf{g}_k^T \mathbf{d}_k, \quad (9)$$

and

$$\left| \mathbf{g}(\mathbf{p}_k + \alpha_k \mathbf{d}_k)^T \mathbf{d}_k \right| \leq -\sigma \mathbf{g}_k^T \mathbf{d}_k, \quad (10)$$

where $0 < \rho < \sigma < 1$. Using the above CG algorithm, we iterated GPU-iMC simulations with $\sigma = 2\rho = 0.5$ after tests. The initial solution \mathbf{p}_0 for each homogeneous phantom at the first wavelength was set to those determined by the integrating sphere method on the thin disk copies of the same suspension materials as the imaging phantoms. With P determined at the first wavelength, the set was used as \mathbf{p}_0 for successive wavelengths. It took about 100 to 200 iMC-GPU simulations to converge at $\delta \leq \delta_{\min}$ for the first wavelength and about 30 to 60 for each of subsequent wavelengths. Local search was performed at selected wavelengths to confirm that the minimum value of δ is reached at the converged parameter values.

Figure 6 presents the mean values and standard deviations of optical parameters of the two homogeneous phantoms at 25 wavelengths selected with the interference filters based on three measurements. It also contains the values of the same parameters determined from the thin disk copies of the same suspensions for each phantom by the integrating sphere method for comparison and validation of the reflectance imaging method. The results show good agreements on values of μ_a between the two sets of samples which is mainly determined by the molecular absorption of the phantom materials. The increased discrepancies on μ_s and g indicate different structures inside the two sets of phantom and thin disk samples on the scales of wavelength that could be due to the variations of embedded air micro-bubbles and actual distribution of TiO₂ particles. Still the wavelength dependence of P yields similar trends on μ_s and reduced scattering coefficient $\mu_s' = (1-g)\mu_s$. Taken together, data in Fig. 6 suggest that the approach of reflectance imaging and MC based inverse solutions is valid and can be used to determine optical parameter set P of turbid phantoms.

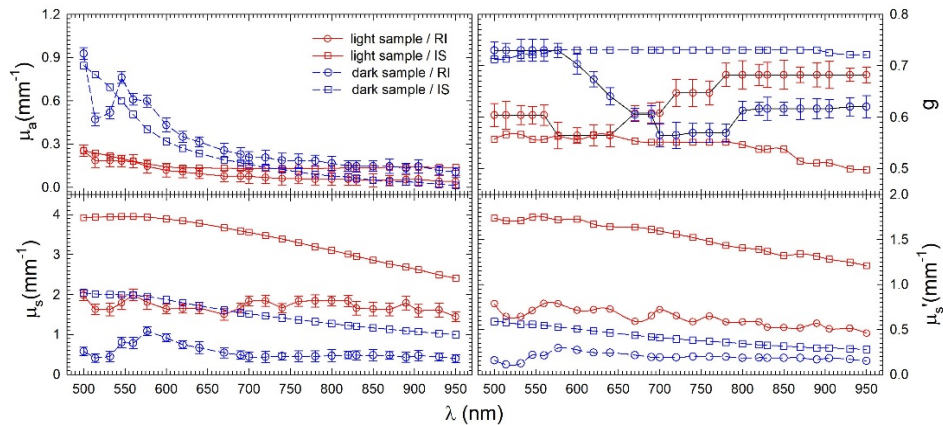


Fig. 6. The wavelength dependence of $P = (\mu_a, \mu_s, g)$ and $\mu_s' = \mu_s(1-g)$ of homogeneous phantoms and thin disk copies made of dark and light suspensions determined by the methods of reflectance imaging (RI) and integrating sphere (IS). The error bars represent standard deviations of three measurements and lines are for visual guide.

3.5 Noninvasive determination of embedded region thickness

A key potential application for the reflectance imaging approach described here is the noninvasive diagnosis and staging of superficial lesions such as dysplastic nevi and malignant melanoma. In current melanoma staging system the Breslow's thickness or tumor thickness plays a central role, which can only be determined through examination of biopsied tissues [35]. To examine this possibility, we performed imaging measurement on the 2-zone heterogeneous phantoms that were made of the two suspensions identical to those for homogeneous phantoms.

Reflectance images R_m were acquired at selected wavelengths from each heterogeneous phantom followed by obtaining calculated image R_c with the optical parameters presented in Fig. 6 for the two zones and variable D for the zone 2 or the embedded region. Both zones in a heterogeneous phantom are of cylindrical shapes with the zone 1 or the host region being of 40mm in outside diameter and 10mm in thickness and zone 2 embedded in the center of the host with 8mm in diameter and variable thickness D . The thickness of the embedded zone 1, made of dark suspensions, was controlled to be $D_m = 0.6, 1.2$ and 1.7 ± 0.1 mm for each of the three phantoms. Figure 7 presents the dependence of δ on D for the three heterogeneous phantoms at different wavelengths. The thickness D of the zone 1 determined from R_m yielded values close to the measured values for $D_m = 0.6$ and 1.2 mm while the difference increases for $D_m = 1.7$ mm. Furthermore, the values of D determined from R_m at different wavelengths cluster around D_m . These results demonstrate the new approach of reflectance imaging has the potential for noninvasive determination of dark zone thickness. The accuracy of D_m determination could be increased by averaging D values over multiple wavelengths.

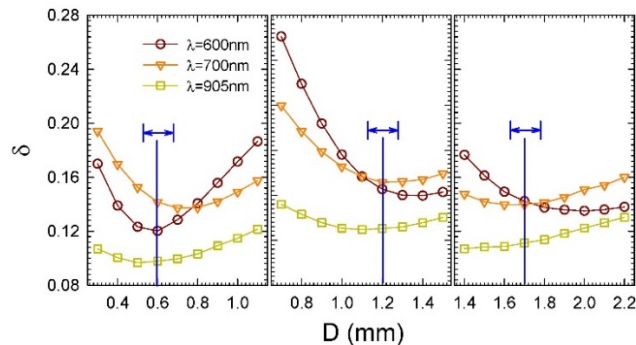


Fig. 7. The objective function δ versus the thickness D of the embedded region in heterogeneous phantoms with reflectance images acquired at different wavelengths. The vertical lines and blue arrows indicate the measured thickness D_m and uncertainty and color lines are for visual guide.

3.6 In vivo estimation of optical parameters of melanocytic nevi

Multispectral reflectance imaging and parameter estimation have been performed on 4 patients with melanocytic nevi to test the feasibility for pathological diagnosis. The patients were selected from those suspected of dysplastic nevi and/or melanoma and were prescribed for biopsy. All 4 patients were male Caucasians of fair skin complexion with ages ranging from 31 to 72 years old. Reflection images I_r were acquired with p-polarizer in the illumination arm and s-polarizer in the imaging arm before biopsy and typically lasted about 25 minutes for each patient. After patient imaging, beam profile images I_s were acquired with the diffuse reflectance standard of $R_s = 40\%$. The two sets of images were then processed to obtain reflectance images R_m at 31 wavelengths between 500 and 950nm for each patient. Figure 8 presents the reflectance images at selected wavelengths from two patients.

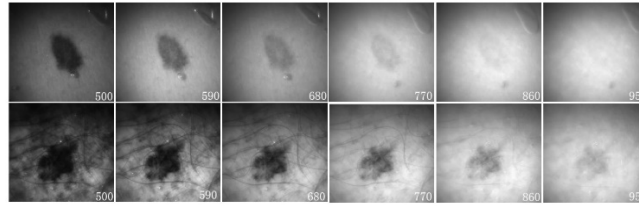


Fig. 8. Examples of cross-polarized reflectance images acquired at wavelengths as marked on each image in the unit of nm. Top row: from patient B with pathology grade 1; bottom row: from patient D with pathology grade 4.

After imaging, each imaged lesion was excised surgically with a margin of about 3mm and the excised tissue was fixed in formalin and embedded in paraffin. Tissue slides were stained with hematoxylin and eosin (H&E) for histopathology grading after vertical sectioning. The severity of each lesion was graded on a standard scale of 0 to 8 based on the Clark's level of invasion [35]: 0 for benign lesion, 1 for mild dysplasia, 2 for moderate dysplasia, 3 for severe dysplasia, 4 for melanoma in situ, 5 for invasive melanoma within 1mm from junction, 6 for invasive melanoma between 1 and 2mm, 7 for invasive melanoma between 2 and 4mm and 8 for invasive melanoma beyond 4mm, all from the epidermis-dermis junction.

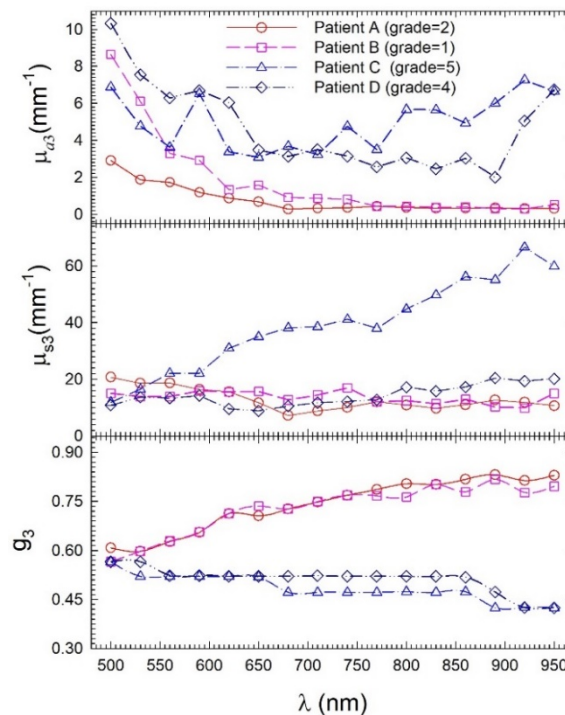


Fig. 9. The wavelength dependence of optical parameters of nevus determined from the measured reflectance image R_m of 4 patients with melanocytic nevi. The pathology grades are noted in parentheses.

For this part of study, we modified a previous iMC code for two-layer skin modeling [20] by a voxel based photon tracking design to handle the irregular shape of the nevi. The melanocytic nevus was treated as the zone 3 of heterogeneous tissues in FOV, with the zone 1 and 2 designated as semi-infinite epidermis and dermis layers respectively. Consequently, the optical parameter set for an imaged skin target consists of 9 parameters given by $P = \{\mu_{a1}, \mu_{s1},$

$g_1; \mu_{a2}, \mu_{s2}, g_2; \mu_{a3}, \mu_{s3}, g_3\}$, where the parameter sets of 1, 2 and 3 refer to epidermis, dermis and nevus, respectively. Furthermore, the thickness of the epidermis layer was set to $D_{ep} = 0.1\text{mm}$ and that of the nevus D_n to a value consistent with the pathology grade to reduce the complexity of the inverse problems of determining P . Compared to the iMC code for modeling 2-zone phantoms, the modified iMC-voxel code took about 5-fold longer time to complete.

While the above optical model of skin nevus is reasonably accurate, GPU implementation of the iMC-voxel code requires substantial resources to complete reconstruction to achieve memory reduction and efficient thread management. Additional difficulty exists in applying the CG algorithm with iMC based forward calculations in the high dimensional space of 9 optical parameters. Instead, we simplified the inverse determination by minimizing the objective function δ sequentially in the order of 9 parameters arranged in P followed with a limited local search in the subspace of $\{\mu_{a3}, \mu_{s3}, g_3\}$ for the nevus. This allows estimation of the optical parameters for each imaged nevus with computational times drastically reduce to less than 5 hours per wavelength. In Fig. 9 we presented the estimated optical parameters of the nevus for 4 patients with a stepsize of 30nm in wavelengths. From these initial results, one can see that both absorption coefficient μ_{a3} and anisotropy factor g_3 in the near-infrared region appear to have larger differences between the patients of low grades and those of high grades. The increased μ_{a3} and decreased g_3 values for patients of grade 4 and 5 are consistent with the variation of the contrasts in the measured images of R_m as shown in Fig. 8, where the nevi exhibit increased degree of darkness for $\lambda > 700\text{nm}$.

4. Discussion

Light penetrating into and emanating from a turbid target in backward scattering directions carries rich information for turbidity characterization. In this report, we present an approach of multispectral reflectance imaging for determining optical and depth parameters of turbid targets within the framework of the RT theory, where the sample can be “non-diffusive” or of low values of a and g . The new approach utilizes an incoherent light source for illumination of the target and can be used to determine μ_a , μ_s and g of a target from one reflectance image at a selected wavelength. Calibration of the measured and calculated reflectance images with the same beam profile image is critical for convergence of the inverse solution. Development of an accurate and rapid MC method is also important to form a well-posed inverse problem and solve in real times. The imaging approach for optical parameter determination has been validated against a well-established integrating sphere method on homogeneous phantoms. Currently, we are investigating combination of a diffusion solution for reflectance imaging and perturbation to replace iMC-GPU based calculations of R_c for further reduction in computational time during iterations [24, 36]. In addition to accuracy, significant reduction in R_c calculation time should enable the new approach of reflectance imaging for spectrophotometric determination of optical parameters within minutes.

One significant use of the reflectance imaging approach is to realize noncontact and noninvasive optical biopsy for diagnosis and staging of lesions. For this purpose, we performed measurement of thickness of an embedded region in heterogeneous phantoms and *in vivo* estimation of optical parameters of nevi in patients. It is widely recognized that the thickness of a penetrating pigmented nevus in the skin provides the key indicator for diagnosis of a malignant melanoma and patient’s prognosis [35]. With limited searches in parameter space, our results presented in Figs. 7 and 9 illustrate the possibility of thickness measurement and the optical parameter set of concerned tissues within the RT theory. The large differences in Fig. 9 between the values of g by the two patient groups of low and high lesion grades are particularly interesting in exhibiting the diagnosis value of anisotropy factor or scattered light distribution. It therefore calls for the necessity to apply RT theory instead of various diffusion approximations for taking the advantages of big data nature of imaging measurement. Needless to say, the patient data here are of very limited to carry statistical

significance and additional studies are required to obtain conclusive results. While not proved yet, it is plausible that the reflectance imaging approach described here could be markedly improved from sequential 3D inverse searches for optical parameters of different zones in a heterogeneous target to a simultaneous inverse search in a 7D or 10D space of optical and thickness parameters.

Funding

China Scholarship Council (#201508430225); Education Department of Hunan Province, China (#14A062).

Acknowledgments

PT acknowledges a visiting scholarship from China Scholarship Council (#201508430225) and a research grant from the Education Department of Hunan Province, China (#14A062).

The authors thank Dr. Kenneth M. Jacobs of Physics Department, East Carolina University for preparation of tissue phantoms and helps on construction of the reflectance imaging systems and Dr. James Finley of Pathology Department, East Carolina University for selection of patients for multispectral imaging and providing diagnosis data.

Disclosures

The authors declare that there are no conflicts of interest related to this article.