

Brachial Flow-Mediated Dilation and Incident Atrial Fibrillation

The Multi-Ethnic Study of Atherosclerosis

Wesley T. O'Neal, Jimmy T. Efirid, Joseph Yeboah, Saman Nazarian, Alvaro Alonso, Susan R. Heckbert, Elsayed Z. Soliman

Objective—It is unknown whether endothelial dysfunction precedes atrial fibrillation (AF) development. The objective of this study was to examine the association of brachial flow-mediated dilation (FMD) with incident AF.

Approach and Results—A total of 2936 participants (mean age, 61±9.9 years; 50% women; 66% nonwhites) from the Multi-Ethnic Study of Atherosclerosis with available ultrasound brachial FMD measurements who were free of baseline AF were included in this analysis. Baseline (2000–2002) FMD was computed from the percentage difference (%FMD) in brachial artery diameter and maximum diameter during measured vasodilator response. AF was ascertained from hospitalization data including Medicare claims during a median follow-up of 8.5 years. Probability-weighted Cox proportional-hazards regression was used to compute hazard ratios and 95% confidence intervals for the association between FMD as a continuous variable (%FMD values per 1-SD increase) and incident AF. Incident AF was detected in 137 (4.7%) participants. Those with %FMD values below the sex-specific median value (median %FMD; men, 3.6%; women, 4.2%; incidence rate per 1000 person-years, 7.3; 95% confidence interval, 5.9–9.0) were more likely to develop AF than people whose %FMD values were above the median value (incidence rate per 1000 person-years, 4.5; 95% confidence interval, 3.4–5.8; log-rank $P=0.0043$). In a multivariable Cox regression analysis, each 1-SD increase in %FMD values (SD, 2.8%) was associated with less incident AF (hazard ratio, 0.84; 95% confidence interval, 0.70–0.99). These results were consistent across subgroups stratified by age, sex, and race/ethnicity.

Conclusions—Smaller brachial FMD values are associated with higher rates of AF, suggesting a role for endothelial dysfunction in AF pathogenesis. (*Arterioscler Thromb Vasc Biol.* 2014;34:2717–2720.)

Key Words: atrial fibrillation ■ endothelium ■ epidemiology

Arterial flow-mediated dilation (FMD) is an indirect measurement of endothelial nitric oxide (NO) release.¹ Impaired FMD represents systemic vascular endothelial dysfunction that is commonly associated with cardiovascular disease (CVD).^{2,3} In addition, the association of FMD with CVD is evidenced by its ability to predict future CVD events in population-based studies.^{4,5}

Endothelial dysfunction, defined by impaired FMD, has been reported in patients with atrial fibrillation (AF).^{6,7} Also, abnormalities in NO signaling have been implicated in atrial ectopy near the pulmonary veins.^{8,9} These findings suggest a potential role for endothelial dysfunction in the development of AF. However, data from population-based studies to support this claim are lacking. The purpose of this study was to

examine the association of brachial FMD with incident AF in the Multi-Ethnic Study of Atherosclerosis (MESA).

Materials and Methods

Materials and Methods are available in the online-only Data Supplement.

Results

Of the 3026 participants from the FMD ancillary study with available FMD measurements, 28 participants had a diagnosis of AF before enrolment in MESA. These cases were detected by Centers for Medicare & Medicaid Services linkage and were not detected in the baseline study ECG. Of those that remained, 3 participants with missing follow-up data and 59

Received on: August 30, 2014; final version accepted on: October 14, 2014.

From the Department of Internal Medicine (W.T.O.), Department of Internal Medicine, Section on Cardiology (J.Y., E.Z.S.), and Department of Epidemiology and Prevention, Epidemiological Cardiology Research Center (EPICARE) (E.Z.S.), Wake Forest School of Medicine, Winston-Salem, NC; Department of Cardiovascular Sciences, East Carolina Heart Institute, Brody School of Medicine, East Carolina University, Greenville, NC (J.T.E.); Departments of Medicine and Cardiology, Johns Hopkins University School of Medicine, Baltimore, MD (S.N.); Department of Epidemiology and Community Health, School of Public Health, University of Minnesota, Minneapolis (A.A.); and Cardiovascular Health Research Unit, Department of Epidemiology, University of Washington, Group Health Research Institute, Seattle (S.R.H.).

The online-only Data Supplement is available with this article at <http://atvb.ahajournals.org/lookup/suppl/doi:10.1161/ATVBAHA.114.304560/-/DC1>.

Correspondence to Wesley T. O'Neal, MD, MPH, Department of Internal Medicine, Wake Forest School of Medicine, Medical Center Boulevard, Winston-Salem, NC. E-mail woneal@wakehealth.edu

© 2014 American Heart Association, Inc.

Arterioscler Thromb Vasc Biol is available at <http://atvb.ahajournals.org>

DOI: 10.1161/ATVBAHA.114.304560

Nonstandard Abbreviations and Acronyms

AF	atrial fibrillation
CVD	cardiovascular disease
FMD	flow-mediated dilation
MESA	Multi-Ethnic Study of Atherosclerosis

participants missing either baseline characteristics or medication data were excluded. A total of 2936 study participants (mean age, 61±9.9 years; 50% women; 66% nonwhites) were included in the final analysis.

FMD was computed from the percentage difference (%FMD) in brachial artery diameter and maximum diameter during measured vasodilator responses. Baseline characteristics stratified by sex-specific median %FMD are shown in Table 1. Participants with %FMD values below the median were more likely to be older, diabetic, and nonwhite and to have lower educational attainment and income compared with higher %FMD values. Persons with %FMD values below the median value were more likely to have increased values for systolic blood pressure and high-density lipoprotein cholesterol, and lower values for total cholesterol than those with %FMD values above the median value. Higher rates of anti-hypertensive medications, aspirin, lipid-lowering therapies, and left ventricular hypertrophy also were observed in people with %FMD values below the median value.

A total of 137 (4.7%) participants developed AF during the study period. Median follow-up for study participants was 8.5 years (interquartile range, 7.9–8.7). Unadjusted cumulative incidence curves stratified by median %FMD are shown in the Figure. Participants with %FMD less than the median value (incidence rate per 1000 person-years, 7.3; 95% confidence interval, 5.9–9.0) were more likely to develop AF compared with participants who had %FMD values greater than the median value (incidence rate per 1000 person-years, 4.5; 95% confidence interval, 3.4–5.8; log-rank $P=0.0043$).

In a multivariable Cox proportional-hazards analysis, each 1-SD increase in %FMD values (SD, 2.8%) was associated with less incident AF (Table 2). The association between FMD and AF remained significant after further adjustment of model 2 with amino-terminal pro-brain natriuretic peptide (hazard ratio, 0.83; 95% confidence interval, 0.69–0.99). These results were consistent across subgroups of MESA participants stratified by age, sex, and race/ethnicity (Table 2).

Discussion

In this analysis from MESA, lower brachial FMD values were associated with increased rates of AF. These findings suggest that endothelial dysfunction, as measured by brachial FMD, plays a role in the pathogenesis of AF.

To our knowledge, only 2 studies have examined the association of brachial FMD with AF. A study of chronic AF participants showed that FMD measurements are significantly impaired compared with sinus rhythm controls.⁶ Another case-control study showed that participants with persistent AF have impaired FMD and that FMD improves after the restoration of sinus rhythm.⁷ However, both studies examined

Table 1. Baseline Characteristics (n=2936)*

Variable	<Median %FMD (n=1470)	≥Median %FMD (n=1466)	<i>P</i> Value†
Age, mean (SD), y	64 (10)	58 (9.1)	<0.0001
Male sex (%)	738 (50)	722 (49)	0.61
Race/ethnicity			
White (%)	440 (30)	561 (38)	...
Black (%)	396 (27)	205 (14)	...
Chinese-American (%)	263 (18)	326 (22)	...
Hispanic (%)	371 (25)	374 (26)	<0.0001
High school or less (%)	569 (39)	496 (34)	0.0060
Income <\$20000 (%)	407 (28)	351 (24)	0.020
Body mass index, mean (SD), kg/m ²	28 (5.1)	28 (5.4)	0.44
Current or former smoker (%)	697 (47)	679 (46)	0.55
Diabetes mellitus (%)	229 (16)	146 (10)	<0.0001
Systolic blood pressure, mean (SD), mm Hg	128 (20)	121 (19)	<0.0001
Total cholesterol, mean (SD), mg/dL	193 (36)	196 (34)	0.048
HDL cholesterol, mean (SD), mg/dL	51 (14)	50 (14)	0.014
Antihypertensive medications (%)	570 (39)	427 (29)	<0.0001
Statins (%)	222 (15)	185 (13)	0.052
Aspirin (%)	357 (24)	311 (21)	0.047
Lipid-lowering medications (%)	245 (17)	205 (14)	0.044
hs-CRP, mean (SD), mg/L	3.5 (5.3)	3.4 (5.7)	0.13
Left ventricular hypertrophy (%)	70 (4.8)	34 (2.3)	0.0003

FMD indicates flow-mediated dilation; HDL, high-density lipoprotein; and hs-CRP, high-sensitivity C-reactive protein.

*Median %FMD values for male and female participants were 3.6% and 4.2%, respectively.

†Statistical significance was tested for categorical variables using the χ^2 method and for continuous variables the Wilcoxon rank-sum method was used.

FMD among participants who already had AF. The current study examined FMD among participants without diagnosed AF and showed that lower FMD values are associated with an increased risk of AF development. In addition, participants with lower %FMD values were observed to have a higher incidence of AF than those in the general population.¹⁰ Therefore, our results provide evidence that impaired FMD precedes the development of AF, suggesting a role for endothelial dysfunction in AF pathogenesis.

Endothelial cells regulate oxidative stress, vascular permeability, platelet aggregation, thrombosis, and vascular tone by controlling the release of several vasoactive substances, including NO.¹¹ The dysfunctional endothelium results in the downregulation of NO and the upregulation of adhesion

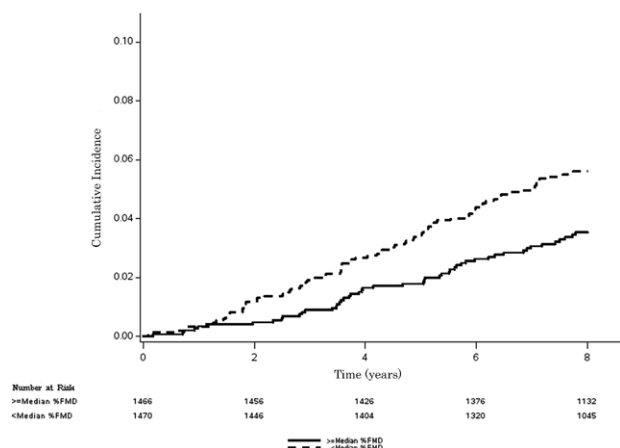


Figure. Cumulative incidence of atrial fibrillation by median percentage flow-mediated dilation (%FMD). Median %FMD values for male and female participants were 3.6% and 4.2%, respectively. Kaplan-Meier estimates were significantly different (log-rank $P=0.0043$).

molecules that promote increased levels of inflammation and oxidative stress. Recent evidence suggests that increased oxidant generation by endothelial NADPH oxidase promotes the uncoupling of NO synthase and subsequent generation of reactive oxygen species and oxidative injury that leads to the electrophysiological remodeling observed in AF.⁸ In addition, exogenous NO has been shown to reduce spontaneous electric activity in cardiomyocytes isolated from the pulmonary vein, implicating NO as a regulator of AF arrhythmogenesis.⁹ Endothelial dysfunction also is associated with increased levels of inflammation that result in atrial ectopy in discharging cells near the pulmonary veins.^{12,13} It is plausible that persons with endothelial dysfunction are more likely to have dysfunctional regulation of the aforementioned processes that increase their risk for AF. Therefore, FMD potentially is able to identify abnormal vascular biological profiles that precede AF development.

Alternatively, several shared risk factors for AF, such as increasing age, diabetes mellitus, hypertension, and smoking, have been associated with endothelial dysfunction.¹⁴⁻¹⁸ Potentially, these conditions increase the level of vascular endothelial dysfunction and predispose individuals to AF. However, our results remained significant after adjustment for these risk factors, suggesting that the association between endothelial dysfunction and AF is not completely explained by shared risk factors.

Brachial FMD has been shown to independently predict incident CVD events among people who are free of CVD at baseline.⁵ Abnormal FMD values possibly identify individuals with subclinical atherosclerosis who are at-risk for CVD. In addition, as evidenced by our results, FMD potentially is able to identify persons who are at-risk for AF. However, further research is needed to examine the predictive ability of FMD for AF among at-risk populations before screening programs that use FMD are introduced.

Our results should be interpreted in the context of certain limitations. Paroxysmal cases of AF possibly were missed because of its time-dependent nature. Incident AF cases were ascertained from hospitalization discharge records and inpatient Medicare claims data using *International Classification of Disease* codes, which possibly resulted in misclassification. However, this method has been reported to have adequate positive predictive value for AF case identification.¹⁹⁻²¹ Brachial FMD measurements were obtained during the initial MESA visit and the association of FMD with AF may vary with repeat FMD measurements. The clinical significance of the FMD values (eg, increase per 1-SD, median) used in this study is unknown and those used were designed to demonstrate exploratory associations (eg, lower FMD values are associated with increased AF risk). Future studies are needed to define clinically relevant values. Nonsignificant interactions were observed by age, sex, and race/ethnicity but the current analysis potentially was underpowered to detect such differences. Furthermore, our results are limited regarding

Table 2. Association of FMD With Atrial Fibrillation by Age, Sex, and Race/Ethnicity*

	Events/No. at Risk	Model 1† HR (95% CI)	P Value	Model 2‡ HR (95% CI)	P Value	P Interaction§
All	137/2936	0.82 (0.69–0.98)	0.029	0.84 (0.70–0.99)	0.048	...
Age, y						
≤65	47/1898	0.68 (0.52–0.89)	0.0048	0.73 (0.56–0.95)	0.022	0.55
>65	90/1038	0.79 (0.63–0.99)	0.037	0.81 (0.64–1.01)	0.065	
Race						
White	70/1001	0.88 (0.70–1.1)	0.27	0.86 (0.68–1.1)	0.22	0.97
Nonwhite	67/1935	0.77 (0.59–1.0)	0.054	0.83 (0.64–1.1)	0.19	
Sex						
Male	85/1460	0.87 (0.69–1.1)	0.26	0.89 (0.70–1.1)	0.33	0.31
Female	52/1476	0.77 (0.59–0.99)	0.048	0.77 (0.59–1.01)	0.062	

CI indicates confidence interval; FMD, flow-mediated dilation; and HR, hazard ratio.

*HRs presented are for %FMD per 1-SD increase (SD, 2.8%). Subgroups were adjusted according to models 1 and 2 excluding the covariate of interest.

†Adjusted for age, sex, race/ethnicity, income, and education.

‡Adjusted for model 1 covariates plus smoking status, systolic blood pressure, diabetes mellitus, body mass index, total cholesterol, high-density lipoprotein cholesterol, aspirin, antihypertensive and lipid-lowering medications, high-sensitivity C-reactive protein, and left ventricular hypertrophy.

§Interactions tested using model 2.

generalizability to other populations because of the older age of participants with FMD values lower than the median value for study participants.

In conclusion, we have shown that brachial FMD values are inversely associated with incident AF in MESA. Our results suggest that endothelial dysfunction precedes the development of AF and may play an important role in the pathogenesis of this common arrhythmia. Further research is needed to confirm our findings and also to explore the clinical use of FMD to identify those who are at-risk for developing AF.

Acknowledgments

We thank the other investigators, the staff, and the participants of the Multi-Ethnic Study of Atherosclerosis (MESA) study for their valuable contributions. A full list of participating MESA investigators and institutions can be found at <http://www.mesa-nhlbi.org>.

Sources of Funding

This research was supported by contracts N01-HC-95159 through N01-HC-95169 from the National Heart, Lung, and Blood Institute and by grants UL1-RR-024156 and UL1-RR-025005 from National Center for Research Resources.

Disclosures

Dr Nazarian is a consultant and principal investigator for research funding awarded to Johns Hopkins University from Bioscience Webster Inc. The other authors report no conflicts.

References

- Celermajer DS, Sorensen KE, Gooch VM, Spiegelhalter DJ, Miller OI, Sullivan ID, Lloyd JK, Deanfield JE. Non-invasive detection of endothelial dysfunction in children and adults at risk of atherosclerosis. *Lancet*. 1992;340:1111–1115.
- Neunteufl T, Katzenschlager R, Hassan A, Klaar U, Schwarzacher S, Glogar D, Bauer P, Weidinger F. Systemic endothelial dysfunction is related to the extent and severity of coronary artery disease. *Atherosclerosis*. 1997;129:111–118.
- Perrone-Filardi P, Cuocolo A, Brevetti G, Silvestro A, Storto G, Dellegrattaglia S, Corrado L, Cafiero M, Camerino R, Polimeno M, Zarrilli A, Caiazzo G, Maglione A, Petretta A, Chiariello M. Relation of brachial artery flow-mediated vasodilation to significant coronary artery disease in patients with peripheral arterial disease. *Am J Cardiol*. 2005;96:1337–1341.
- Yeboah J, Crouse JR, Hsu FC, Burke GL, Herrington DM. Brachial flow-mediated dilation predicts incident cardiovascular events in older adults: the Cardiovascular Health Study. *Circulation*. 2007;115:2390–2397.
- Yeboah J, Folsom AR, Burke GL, Johnson C, Polak JF, Post W, Lima JA, Crouse JR, Herrington DM. Predictive value of brachial flow-mediated dilation for incident cardiovascular events in a population-based study: the multi-ethnic study of atherosclerosis. *Circulation*. 2009;120:502–509.
- Freestone B, Chong AY, Nuttall S, Lip GY. Impaired flow mediated dilatation as evidence of endothelial dysfunction in chronic atrial fibrillation: relationship to plasma von Willebrand factor and soluble E-selectin levels. *Thromb Res*. 2008;122:85–90.
- Skalidis EI, Zacharis EA, Tsetis DK, Pagonidis K, Chlouverakis G, Yarmenitis S, Hamilos M, Manios EG, Vardas PE. Endothelial cell function during atrial fibrillation and after restoration of sinus rhythm. *Am J Cardiol*. 2007;99:1258–1262.
- Kim YM, Guzik TJ, Zhang YH, Zhang MH, Kattach H, Ratnatunga C, Pillai R, Channon KM, Casadei B. A myocardial Nox2 containing NAD(P)H oxidase contributes to oxidative stress in human atrial fibrillation. *Circ Res*. 2005;97:629–636.
- Lin YK, Lu YY, Chen YC, Chen YJ, Chen SA. Nitroprusside modulates pulmonary vein arrhythmogenic activity. *J Biomed Sci*. 2010;17:20.
- Miyasaka Y, Barnes ME, Gersh BJ, Cha SS, Bailey KR, Abhayaratna WP, Seward JB, Tsang TS. Secular trends in incidence of atrial fibrillation in Olmsted County, Minnesota, 1980 to 2000, and implications on the projections for future prevalence. *Circulation*. 2006;114:119–125.
- Endemann DH, Schiffrin EL. Endothelial dysfunction. *J Am Soc Nephrol*. 2004;15:1983–1992.
- Haïssaguerre M, Jais P, Shah DC, Takahashi A, Hocini M, Quiniou G, Garrigue S, Le Mouroux A, Le Métayer P, Clémenty J. Spontaneous initiation of atrial fibrillation by ectopic beats originating in the pulmonary veins. *N Engl J Med*. 1998;339:659–666.
- Aviles RJ, Martin DO, Apperson-Hansen C, Houghtaling PL, Rautaharju P, Kronmal RA, Tracy RP, Van Wagoner DR, Psaty BM, Lauer MS, Chung MK. Inflammation as a risk factor for atrial fibrillation. *Circulation*. 2003;108:3006–3010.
- Celermajer DS, Sorensen KE, Spiegelhalter DJ, Georgakopoulos D, Robinson J, Deanfield JE. Aging is associated with endothelial dysfunction in healthy men years before the age-related decline in women. *J Am Coll Cardiol*. 1994;24:471–476.
- McVeigh GE, Brennan GM, Johnston GD, McDermott BJ, McGrath LT, Henry WR, Andrews JW, Hayes JR. Impaired endothelium-dependent and independent vasodilation in patients with type 2 (non-insulin-dependent) diabetes mellitus. *Diabetologia*. 1992;35:771–776.
- Paniagua OA, Bryant MB, Panza JA. Role of endothelial nitric oxide in shear stress-induced vasodilation of human microvasculature: diminished activity in hypertensive and hypercholesterolemic patients. *Circulation*. 2001;103:1752–1758.
- Celermajer DS, Sorensen KE, Georgakopoulos D, Bull C, Thomas O, Robinson J, Deanfield JE. Cigarette smoking is associated with dose-related and potentially reversible impairment of endothelium-dependent dilation in healthy young adults. *Circulation*. 1993;88(5 Pt 1):2149–2155.
- Weiner SD, Ahmed HN, Jin Z, Cushman M, Herrington DM, Nelson JC, Di Tullio MR, Homma S. Systemic inflammation and brachial artery endothelial function in the Multi-Ethnic Study of Atherosclerosis (MESA). *Heart*. 2014;100:862–866.
- Alonso A, Agarwal SK, Soliman EZ, Ambrose M, Chamberlain AM, Prineas RJ, Folsom AR. Incidence of atrial fibrillation in whites and African-Americans: the Atherosclerosis Risk in Communities (ARIC) study. *Am Heart J*. 2009;158:111–117.
- Jensen PN, Johnson K, Floyd J, Heckbert SR, Carnahan R, Dublin S. A systematic review of validated methods for identifying atrial fibrillation using administrative data. *Pharmacoepidemiol Drug Saf*. 2012;21(suppl 1):141–147.
- Bengtson LG, Kucharska-Newton A, Wruck LM, Loehr LR, Folsom AR, Chen LY, Rosamond WD, Duval S, Lutsey PL, Stearns SC, Sueti C, Yeh HC, Fox E, Alonso A. Comparable ascertainment of newly-diagnosed atrial fibrillation using active cohort follow-up versus surveillance of centers for medicare and medicaid services in the atherosclerosis risk in communities study. *PLoS One*. 2014;9:e94321.

Significance

Endothelial dysfunction has been reported in patients with atrial fibrillation. However, the temporal association between impaired endothelial function and atrial fibrillation has not been examined. In this analysis from the Multi-Ethnic Study of Atherosclerosis, we have shown that impaired brachial artery flow-mediated dilation, an indirect marker of endothelial dysfunction, precedes the development of atrial fibrillation. These findings support the hypothesis that alterations in vascular biology predispose to atrial fibrillation arrhythmogenesis.