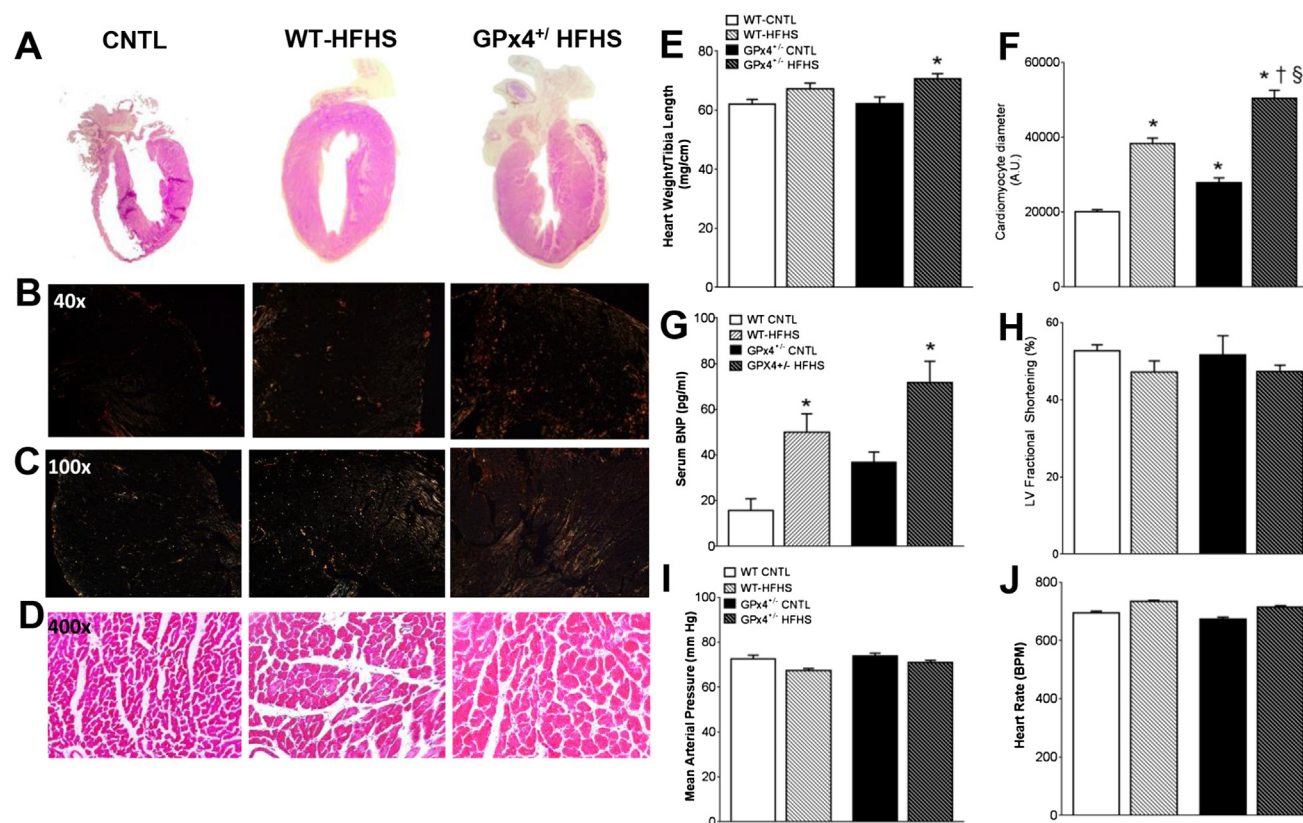




Corrigendum to “Obesity in a model of *gpx4* haploinsufficiency uncovers a causal role for lipid-derived aldehydes in human metabolic disease and cardiomyopathy” [Mol Metab 4 (6) (2015) 493–506]*

Lalage A. Katunga^{1,3}, Preeti Gudimella¹, Jimmy T. Efirid^{3,5}, Scott Abernathy¹, Taylor A. Mattox¹, Cheres Beatty¹, Timothy M. Darden¹, Kathleen A. Thayne¹, Hazaim Alwair⁵, Alan P. Kypson⁵, Jitka A. Virag², Ethan J. Anderson^{1,4,*}

Figure 2 of the original published manuscript contained an incorrect graph for panel F that did not correspond to the Figure Legend. The correct graph, showing cardiomyocyte diameter, is now included in this manuscript.



*DOI of original article: <http://dx.doi.org/10.1016/j.molmet.2015.04.001>

¹Department of Pharmacology & Toxicology, East Carolina University, Greenville, NC, United States ²Department of Physiology, East Carolina University, Greenville, NC, United States ³Department of Public Health, East Carolina University, Greenville, NC, United States ⁴East Carolina Diabetes and Obesity Institute, East Carolina University, Greenville, NC, United States ⁵East Carolina Heart Institute, East Carolina University, Greenville, NC, United States

*Corresponding author. Department of Pharmacology & Toxicology, Brody School of Medicine, East Carolina University, BSOM 6S-11, 600 Moye Blvd., Greenville, NC 27834, United States. E-mail: andersonet@ecu.edu (E.J. Anderson).

Available online 19 June 2015

<http://dx.doi.org/10.1016/j.molmet.2015.06.005>